

MX Vision Sperm Sediment®

Sperm sediment analysis



MX Vision Sperm Sediment®

Sperm sediment analysis

Cytological analysis of sperm sediment



Diagnostics

- latent trichomoniasis
- fungal infections
- HPV infections
- disbiosis

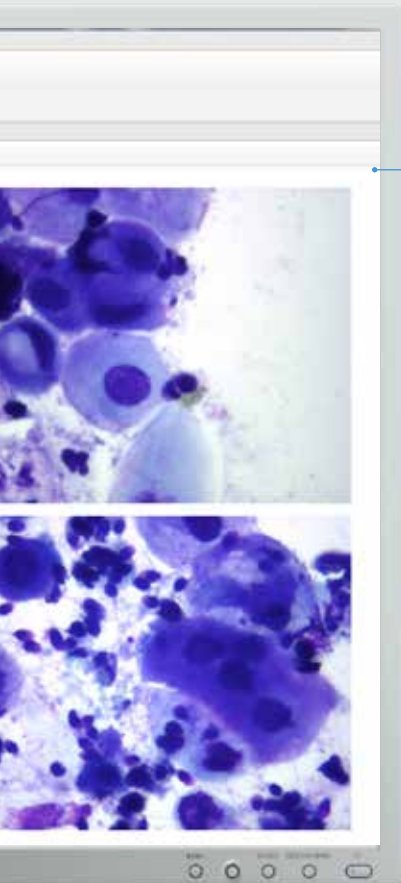


A pre-set algorithm for analysis of sperm sediment

Automatic calculation of diagnostic CSS (Cytology of Sperm Sediment) index

Telemedicine and remote consultations with colleagues

Database management



Combination of modern technology and classical microscopy extends working possibilities

A pre-set algorithm for cytology analysis of sperm sediment

Analysis algorithm for diagnostics based on cell's morphological markers

Sample Attributes

Risk Indicators for T.vaginalis =2 (*)

➤ **Macroscopic evaluation of the sample**

Sample background Close-grained (x)
 Granular vitreous
 Vitreous

➤ **Microscopy of the sample**

Inflammatory response evaluation Leukocytes >3 p/HPF
 Leukocytes <3

Related microbiota evaluation Absent (*)
 Present

Polymorphic rod-shaped (*)
 Other

Abundant small coccid
 Abundant mixed
 Leptothrix type bacteria
 Elements of Candida
 L-forms of N.gonorrhoeae
 Other protozoa
 Elements of pathogenic fungus

Presence of cells atypical for semen sediment Present (*)
 Absent

Cells with morphology similar to T.vaginalis
 Other atypical cells

➤ **Other atypical cells**

Squamous epithelium cells morphologically similar to coilocytes
 Debride type cells
 Multinucleated cells morphologically similar to Herpes simplex II
 Cells with alterations typical for a virus infection

Result Interpretation

Notes

MX Vision Sperm Sediment® system for analysis of sperm sediment

General characteristics

Working modes	scanning of cytology sperm sediment samples
Simultaneous loading	1 slide
Slide handling	manual, successive
Optical system	4x, 10x, 40x, 100x oil
Validation	according to the pre-set cytology algorithm
Microscopic slides	standard 75x25 mm, 1.1 mm thick
Communication	bi-directional LIS, LIS2-A2 (ASTM), Ethernet
Multiple user access	4 pre-set types of users: Administrator, Doctor, Technician, Receptionist; new types of users can be added; adjustable access rights for users
Database	multiple systems can share one database; archiving of results via transfer to external storage media
Software	Vision Sperm® Sediment — allows to specialists to easily diagnostic latent trichomoniasis, fungal, HPV infections, disbiosis and etc. — reported results based on cell's morphological markers — automatic calculation of diagnostic CSS index — capture of required fields of view — creation of cytology sample gallery — database for achive managment — remote access and network capabilities

Ordering Information

Description	Code
MX Vision Sperm Sediment® / Standard set System includes: MicroOptix MX 100 (T) microscope, Vision CAM® V005 (C) digital camera, Vision Sperm® Sediment software, personal computer	60.0023.13
MX Vision Sperm Sediment® / Primary Set Set includes: MicroOptix MX 100 (T) microscope, Vision CAM® V005 (C) digital camera, Vision Sperm® Sediment software. <i>Use your personal computer*</i>	60.0023.14

* Minimal PC requirements: Intel Core i5, 4 GB RAM, 1 TB HDD, Windows 7, 1920x1080

* Product images are shown for reference only and final product may differ