

MX Vision Sperm Sediment®

Sperm sediment analysis



MX Vision Sperm Sediment®

Sperm sediment analysis

Cytological analysis of sperm sediment

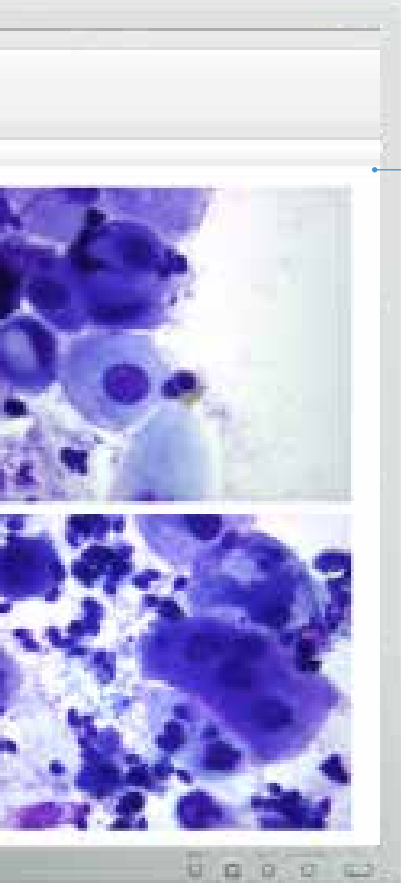


Diagnostics

- latent trichomoniasis
- fungal infections
- HPV infections
- disbiosis
- and etc.



- A pre-set algorithm for analysis of sperm sediment
- Automatic calculation of diagnostic CSS (*Cytology of Sperm Sediment*) index
- Telemedicine and remote consultations with colleagues
- Database management



Combination of modern technology and classical microscopy extends working possibilities

A pre-set algorithm for cytology analysis of sperm sediment

Analysis algorithm for diagnostics based on cell's morphological markers

Sample Attributes

Risk indicators for *T.vaginalis* -2 (x)

▲ **Macroscopic evaluation of the sample**

Sample background Close-grained (x)
 Granular vitreous
 Vitreous

▲ **Microscopy of the sample**

Inflammatory response evaluation Leukocytes >3 p/HPF
 Leukocytes <3

Related microbiota evaluation Absent (#)
 Present

Polymorphic rod-shaped (x)
 Other

Abundant small coccid
 Abundant mixed
 Leptothrix type bacteria
 Elements of Candida
 L-forms of *N.gonorrhoeae*
 Other protozoa
 Elements of pathogenic fungus

Presence of cells atypical for semen sediment Present (#)
 Absent

Cells with morphology similar to *T.vaginalis*
 Other atypical cells

▲ **Other atypical cells**

Squamous epithelium cells morphologically similar to colocytes
 Debride type cells
 Multinucleated cells morphologically similar to Herpes simplex II
 Cells with alterations typical for a virus infection

Result Interpretation

Notes

MX Vision Sperm Sediment® system for analysis of sperm sediment

General characteristics

Working modes	scanning of cytology samples
Simultaneous loading	1 slide
Slide handling	manual, successive
Optical system	4x, 10x, 40x, 100x oil
Validation	according to the pre-set cytology algorithm
Microscopic slides	standard 75x25 mm, 1.1 mm thick
Communication	bi-directional LIS, LIS2-A2 (ASTM), Ethernet
Multiple user access	4 pre-set types of users: Administrator, Doctor, Technician, Receptionist; new types of users can be added; adjustable access rights for users
Database	multiple systems can share one database; archiving of results via transfer to external storage media
Software	Vision Sperm® Sediment — diagnostic of latent trichomoniasis, fungal, HPV infections, disbiosis and etc. — algorithm for diagnostics based on cell's morphological markers — automatic calculation of diagnostic CSS index — capture of required fields of view — creation of cytology sample gallery — database for archive management — remote access and network capabilities

Ordering Information

Description	Code
MX Vision Sperm Sediment® / Standard set System includes: MicroOptix MX 100T microscope, Vision CAM® V005 (C) digital camera, Vision Sperm® Sediment software, personal computer	60.0023.13
MX Vision Sperm Sediment® / Primary Set Set includes: MicroOptix MX 100T microscope, Vision CAM® V005 (C) digital camera, Vision Sperm® Sediment software. <i>Use your personal computer*</i>	60.0023.14

* Minimal PC requirements: Intel Core i5, 4 GB RAM, 1 TB HDD, Windows 7, 1920x1080

* Product images are shown for reference only and final product may differ