

Integrated screen camera, professional imaging system



HDMI 2.0MP
HD preview
and snapshot

Remarkable
color reduction

High dynamic
range and high
sensitivity
SONY CMOS

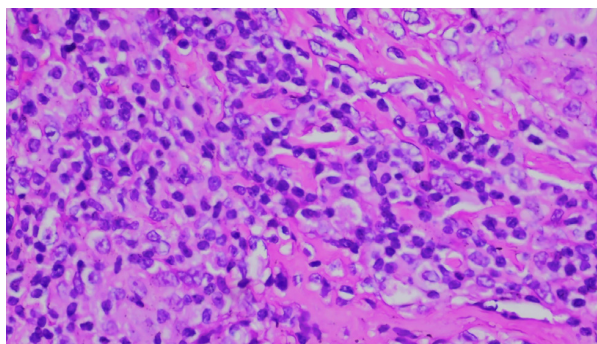
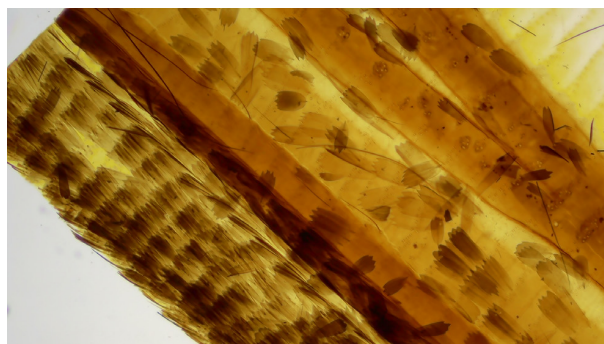
Standard
C-mount,
external
camera system

Equipped
with 12.5"
HD 1080P
displayer

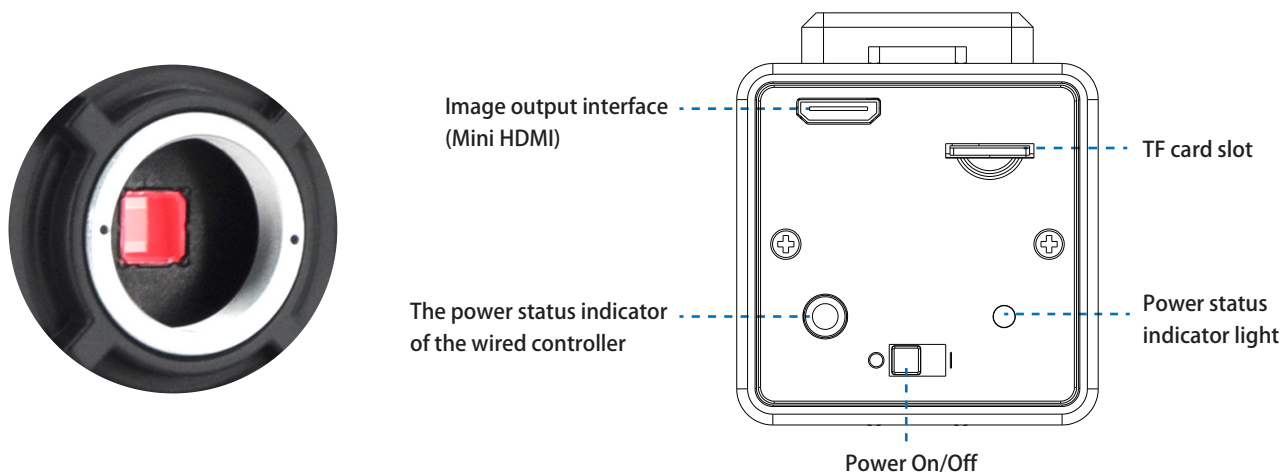
The displayer
rotatable at
multiple angles
and joints

Highlights

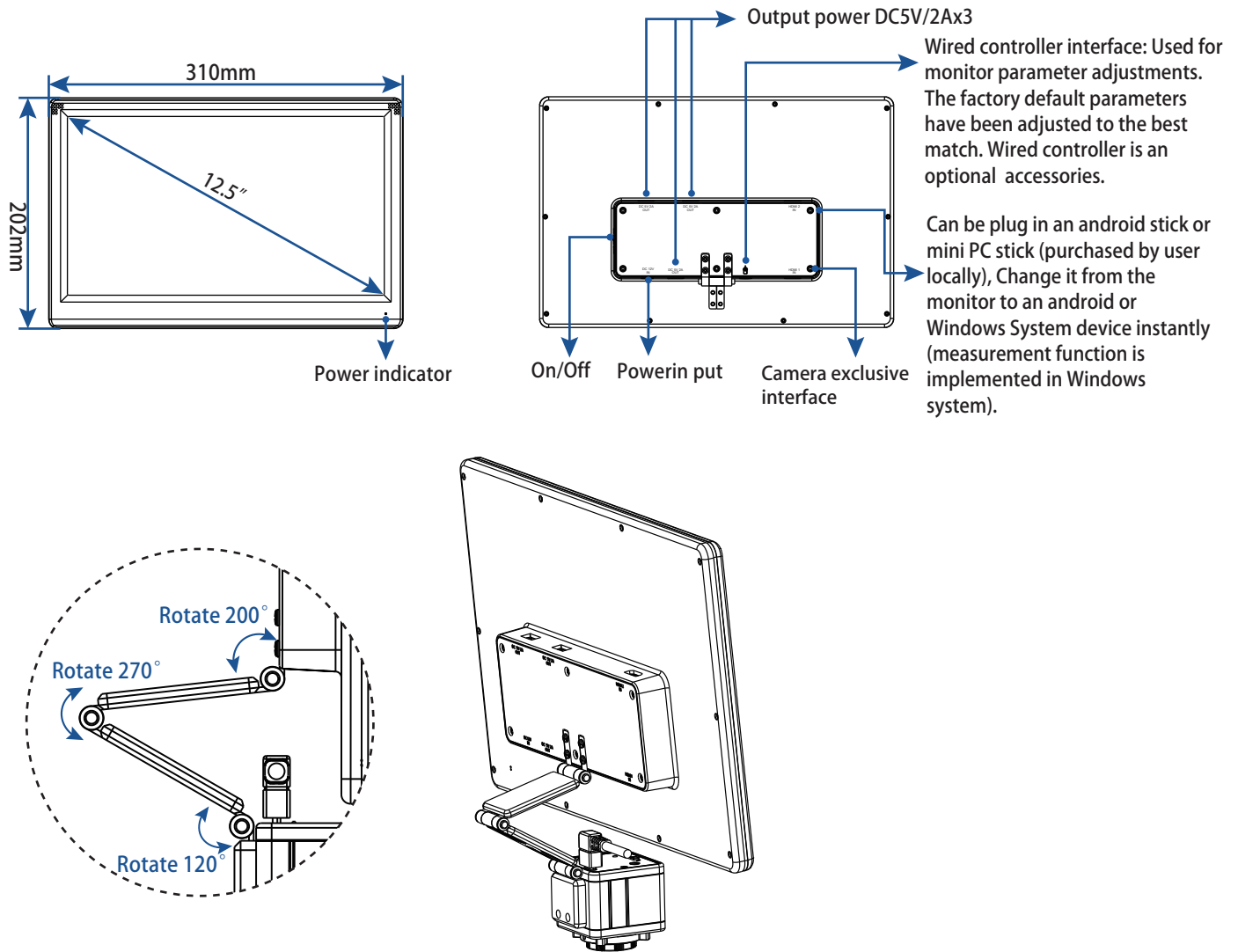
- 1 HD200-M is a professional imaging system of camera integrated with display, which uses high-performance CMOS on image capture and adopts high-resolution fog LCD to truly restore images. With multi-angle and multi-joint rotation, the display is designed flexibly and easy to use, which meets the requirement of fast and efficient inspection. Equipped with wired controller to facilitate operation.



- 2 Use 1/2.8 inch SONY CMOS IMX291 ultra wide dynamic ultra low illumination sensor camera, excellent color reduction, to help you get the sharpest image effect.

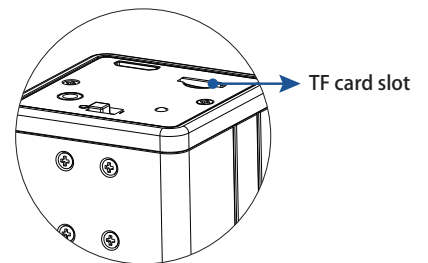


- 3** Complete solution - one device can realize multiple functions. Equipped with 12.5 inches full HD display, display from different joint rotation (max 270°, mini 120°).

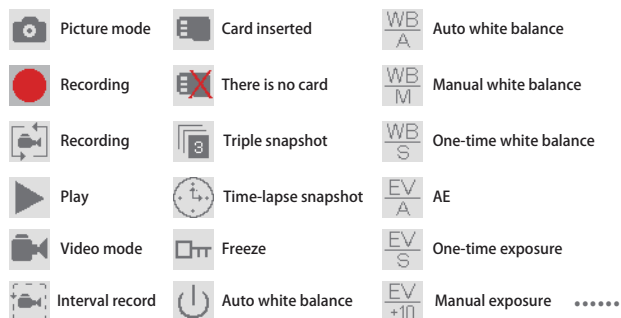


- 4** As a standard configuration, it provides built-in and efficient image capture software, which is convenient for you to use quickly.

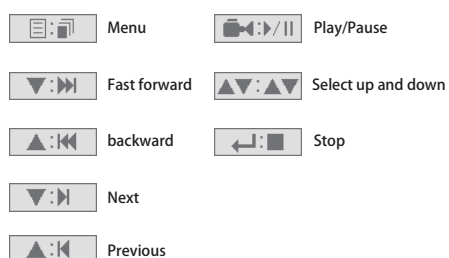
- Real time image preview, one button snapshot, continuous take photo and record.
- Parameter adjustment such as exposure, white balance, resolution, etc.
- Customize cross lines.
- HDR wide dynamic of anti-glare.
- Freeze, sharpness adjustment, cross lines, record mode, language settings, formatting, color adjustment, spectrum Image quality adjustment, fast preview, image rotation, etc.



Rich Functions



Play menu



HD200-M Parameters

Camera Specifications

Image Sensor	SONY CMOS IMX291 super wide dynamic CMOS sensor
Expose mode	Rolling shutter
Maximum Resolution	1920 x 1080 (2,073,600 pixels)
Sensor Optical Format	1/2.8" (6.08 mm (H) x 4.415mm(V))
Pixel Size	2.9 μm x 2.9 μm
Dynamic Range	128dB
SNR(Signal Noise Ratio)	30dB
Spectral Characteristics	380~650nm
Exposure Capability	Real-time auto, Single auto, Manual adjustment
White Balance	Real-time auto, Single auto, Manual adjust R G B separately
Display (preview) resolution	HDMI: 1920 x 1080P60
Record format	Snapshot Picture Format: JPG Resolution: 1920x1080 Record Video Format: MOV Resolution: 1920x1080P30, 1280x720P60
Record Route	TF card (Maximum support 128G, Support hot plug)

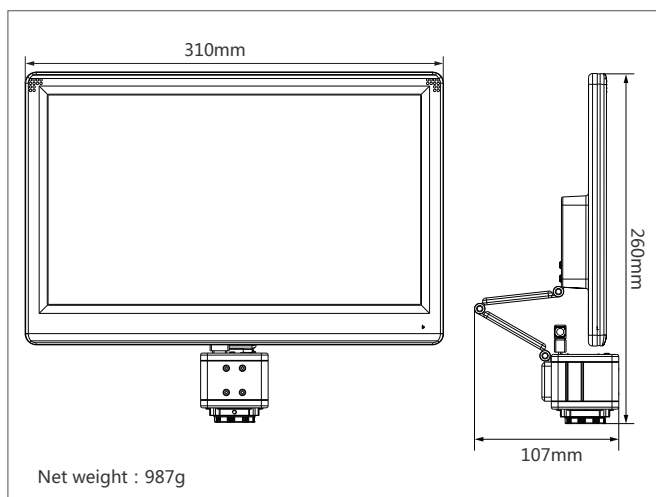
Camera Interface Parameter

Camera interface	C mount thread (1" x 1/32")
Image output interface	HDMI TYPE C (Mini HDMI)

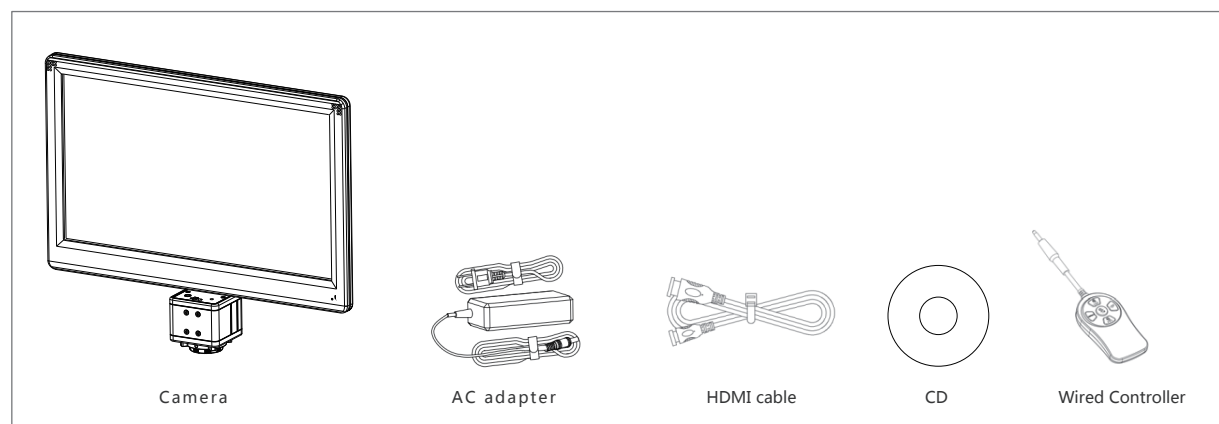
Monitor Parameters

Size	12.5"
Type	a-Si TFT-LCD/IPS
Resolution	1920 x 1080
Color display	16.7M
Brightness	300 Nit
Contrast	800:1
Visible angle	170° horizontal and vertical
Power supply	Adapter: Input:AC100~240V/50~60Hz; Output:DC12V/5A/60W Monitor:USB-A-Output:DC5V/2A×3
Image input interface	HDMI1,HDMI2

HD200-M Dimensions



HD200-M Packing List



Meiji Techno America, Inc.

5895 Rue Ferrari

San Jose, CA 95138

Tel: 408.226.3454 | Fax: 408.226.0900

www.meijitechno.com