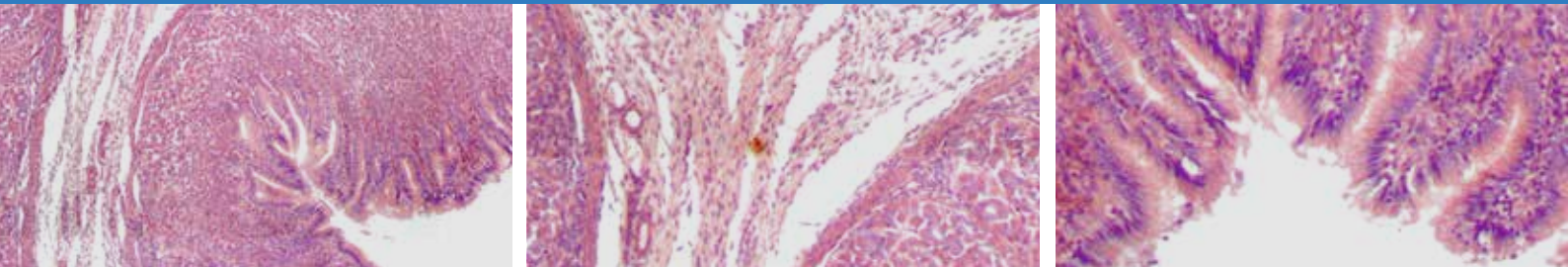


# Meiji Techno MT5000 (DSS)

## Digital slide scanners



Fast scanning. Capturing the image of complete slide area

## For digital pathology, research and education

Simultaneous loading from 1 to 4 slides

Creating virtual sample

Focus: automatic, extended, range

Plan Apochromat objectives

Immersion scanning with high definition (optional)



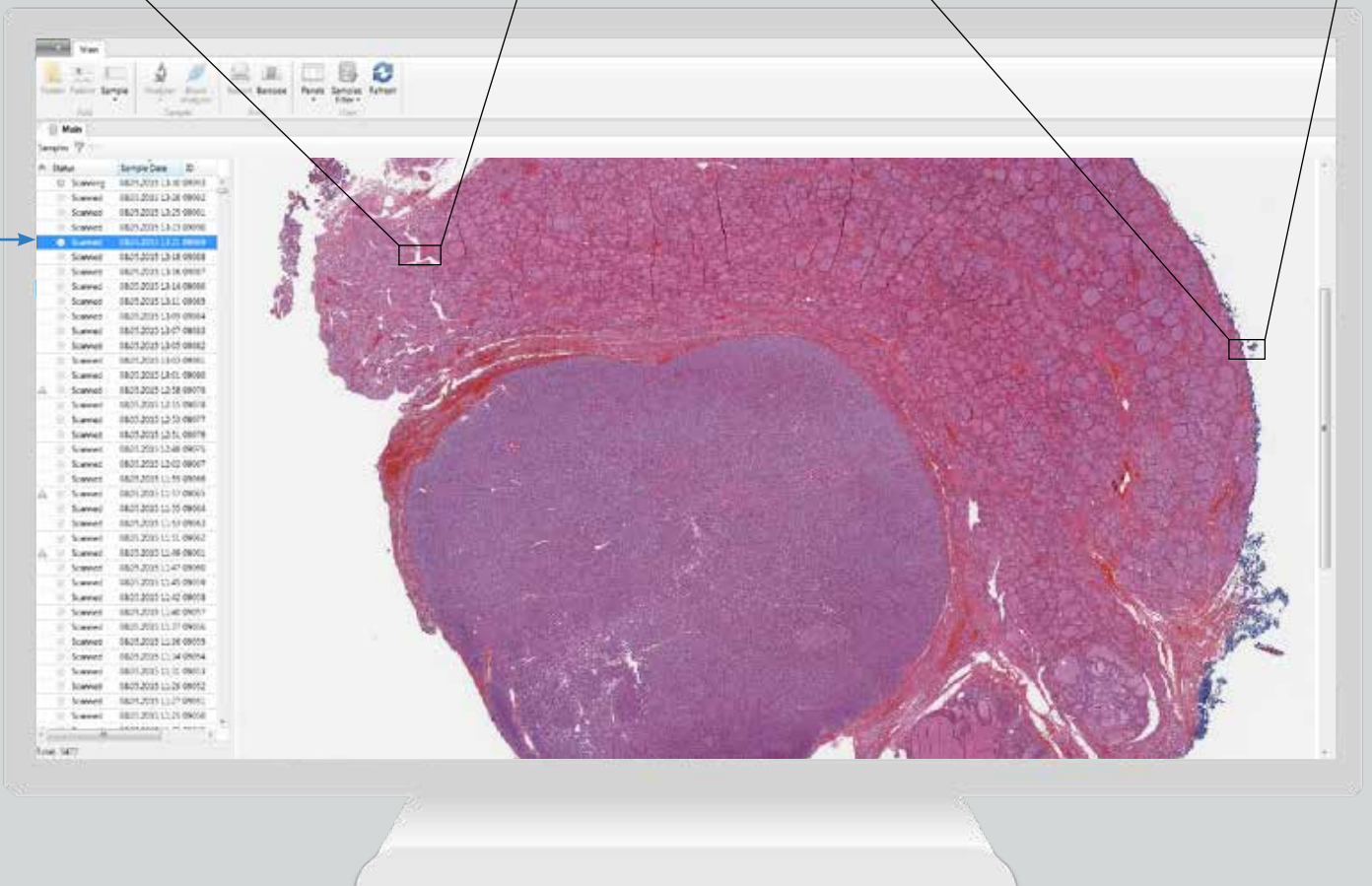
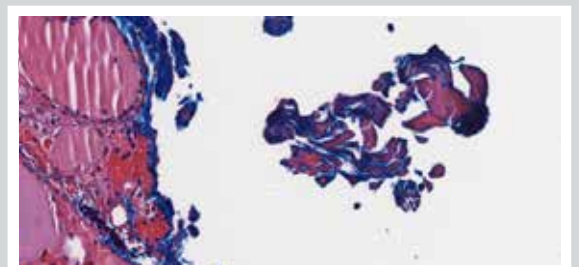
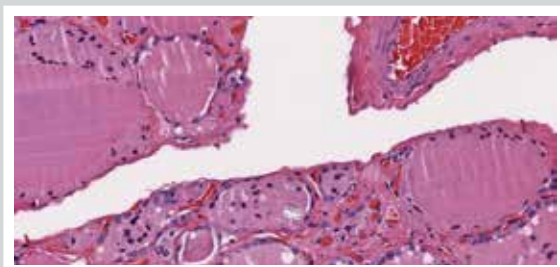
Works with standard  
75x25 mm slides



# Perfect image quality

Made in Japan  
5 Year Warranty

## Convert your glass slides into digital data

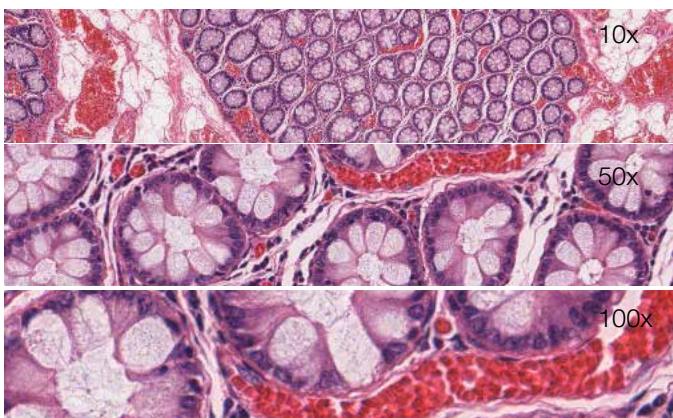


# Main features

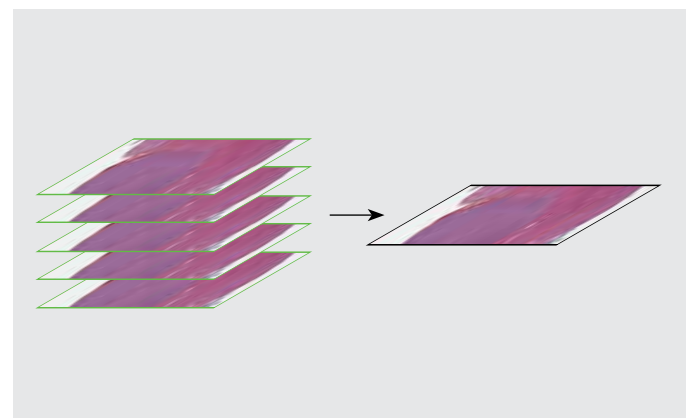


## Panoramic images of complete slide area

Creation of high quality digital slides. Exceptional quality, high definition and accurate color rendition thanks to Plan Apochromat objectives.

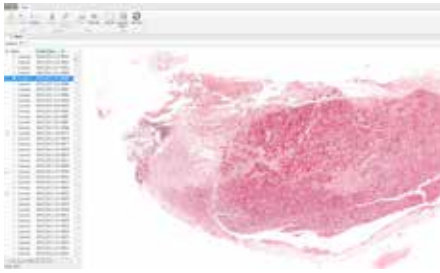


Additional magnifications

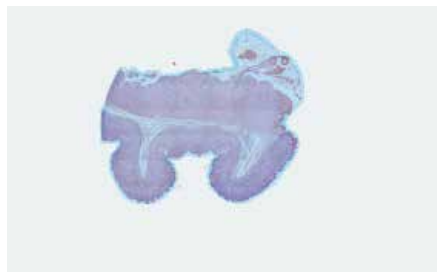


Extended focus

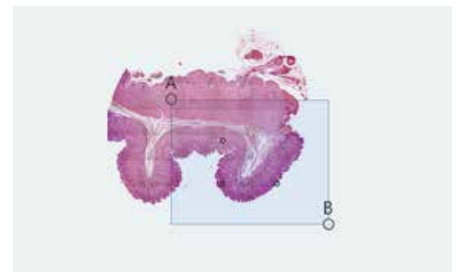
# Software



**Database for archive management**



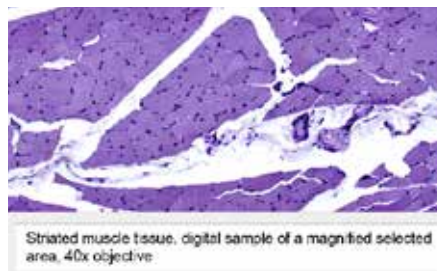
**Autodetection of scanning area**



**Adjustable size of scanning area**



**Working with images: select, edit, marks and text comments**



**Comments to digital sample image**



**Education and professional development**

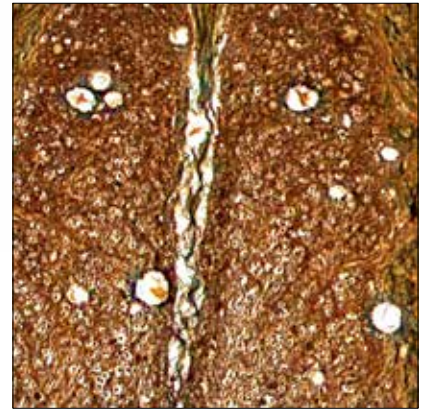


**Telemedicine and remote consultations**

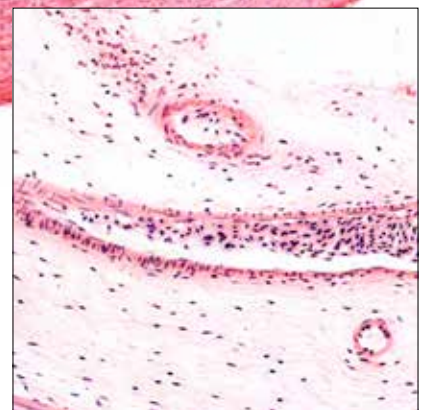
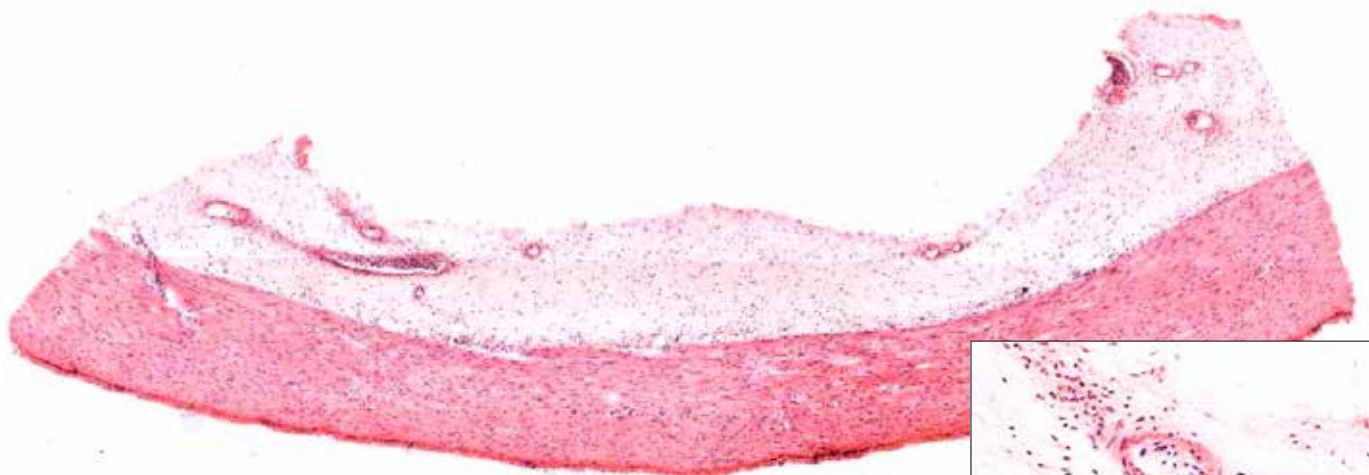


**Remote access**

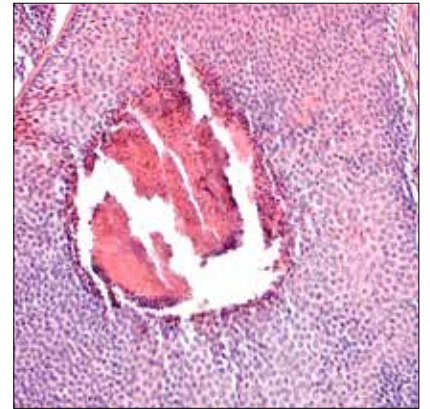
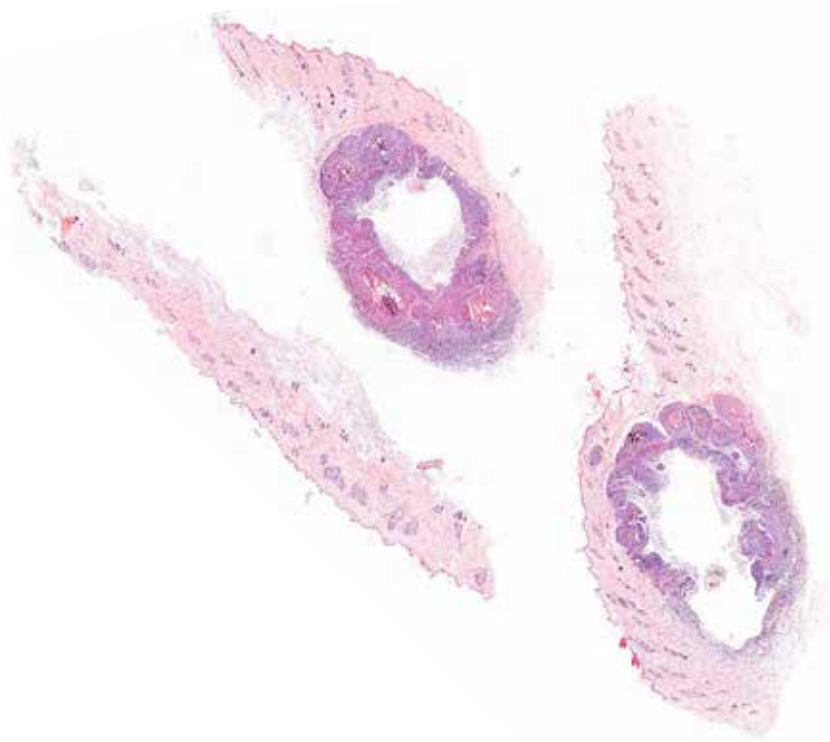
# Examples of digital slides



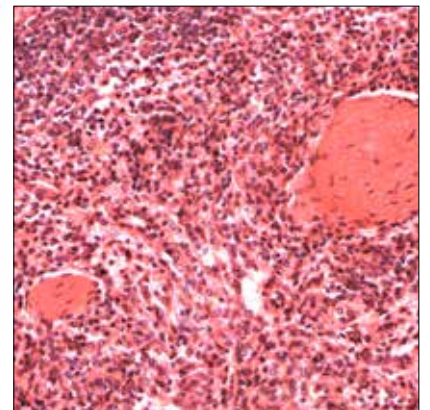
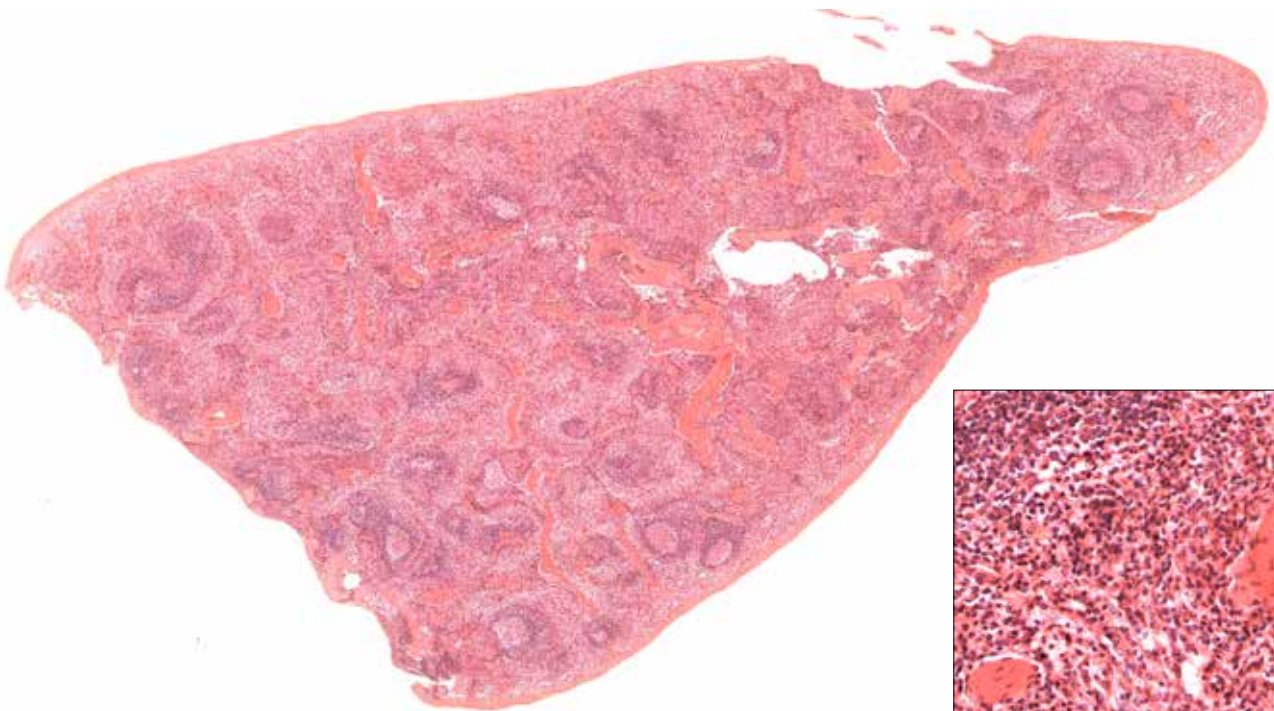
Spinal cord



Muscular tissue

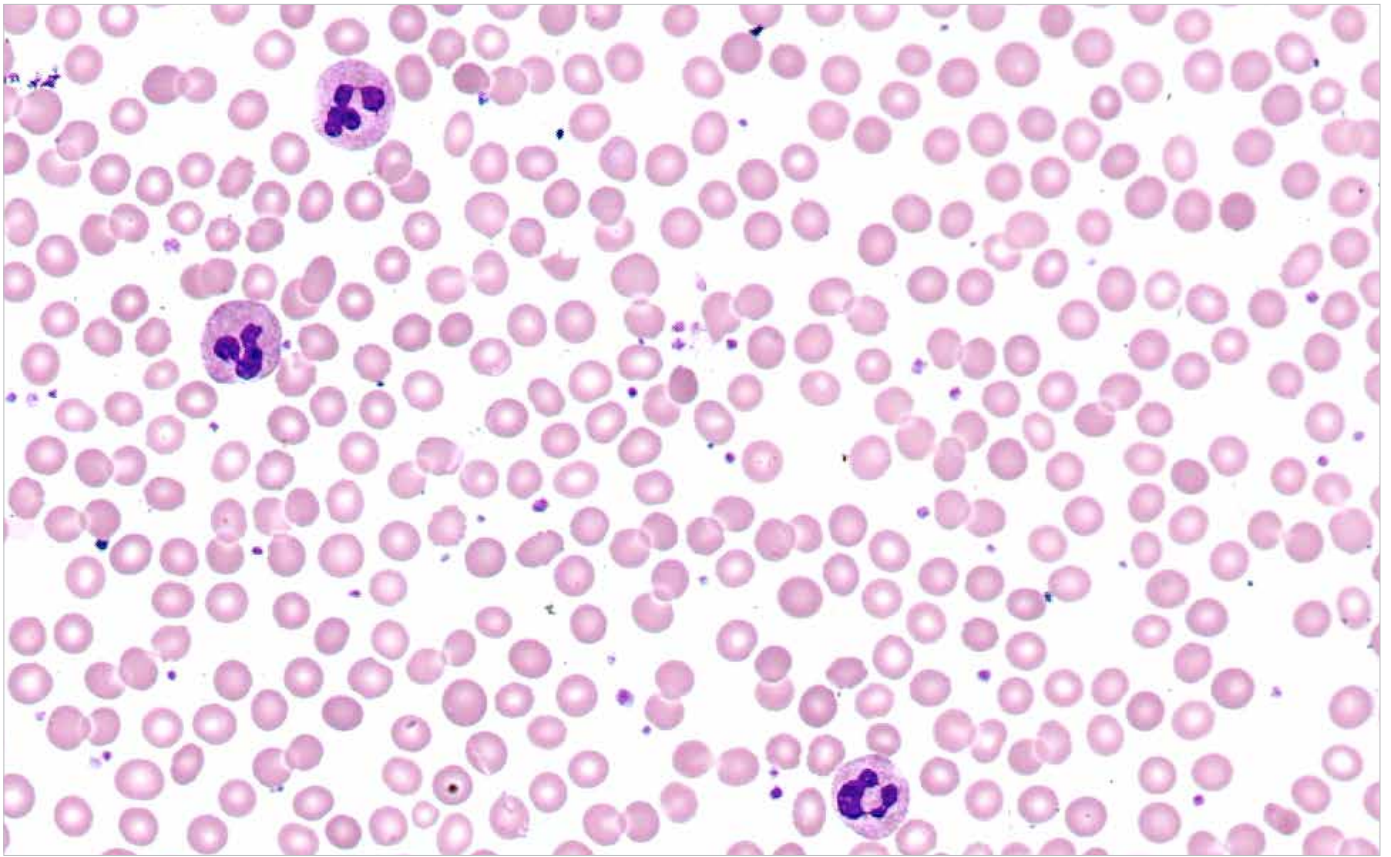


Lymphatic nodes



Spleen

# Immersion scanning

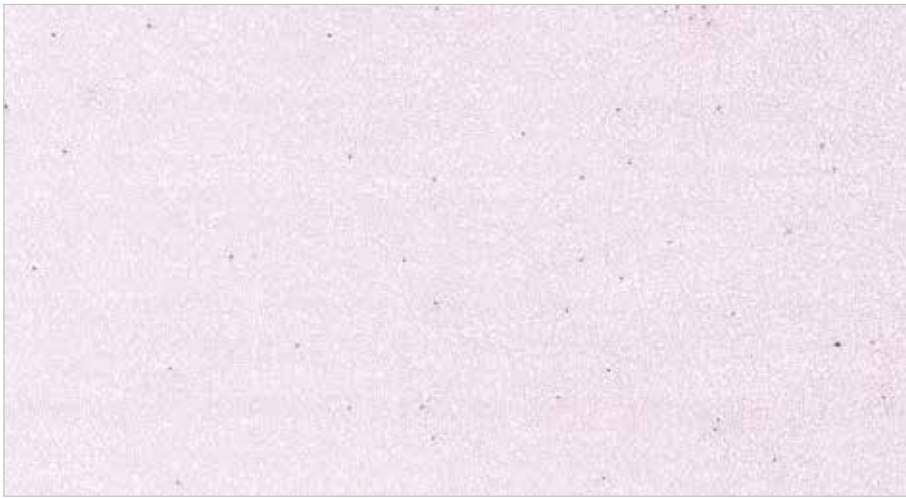


## Immersion scanning with high magnification and high definition

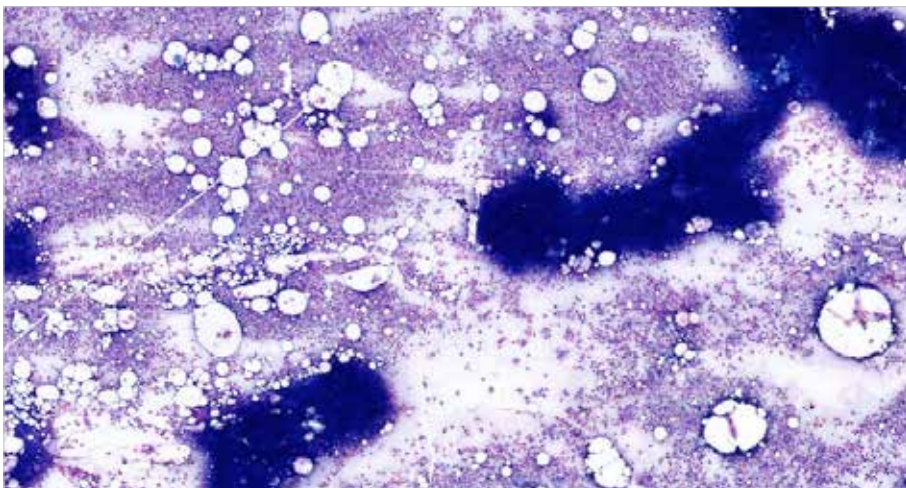
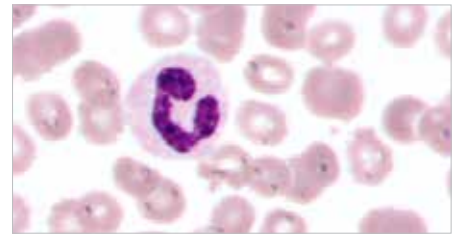
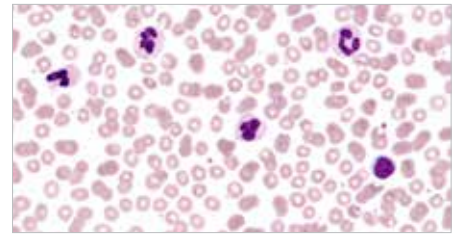
Sample scanning with high magnification (60x, 100x), when the high quality of images is required. For example, for blood and bone marrow samples.

Special high definition objectives are used for immersion scanning. These objectives work with immersion oil.

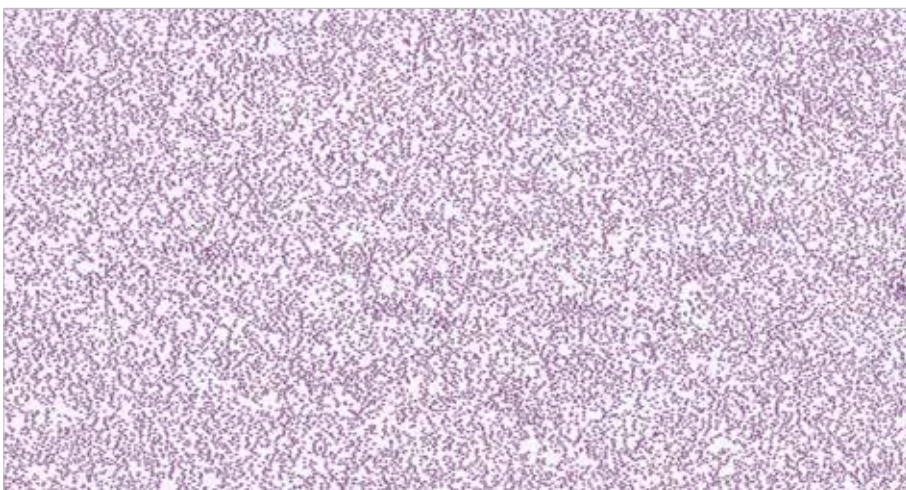
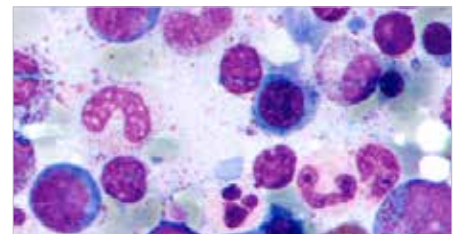
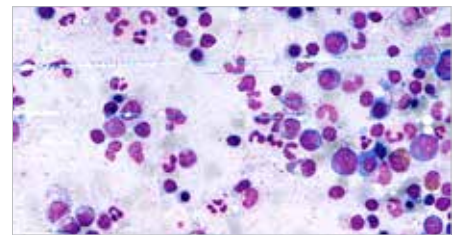




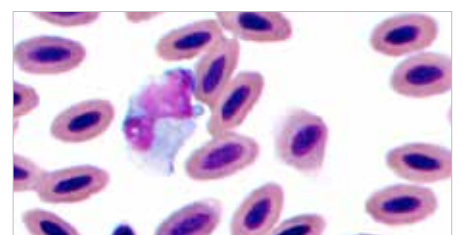
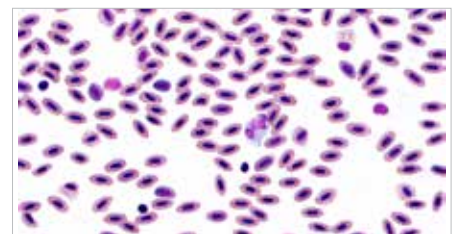
Human blood



Bone Marrow



Hawk blood

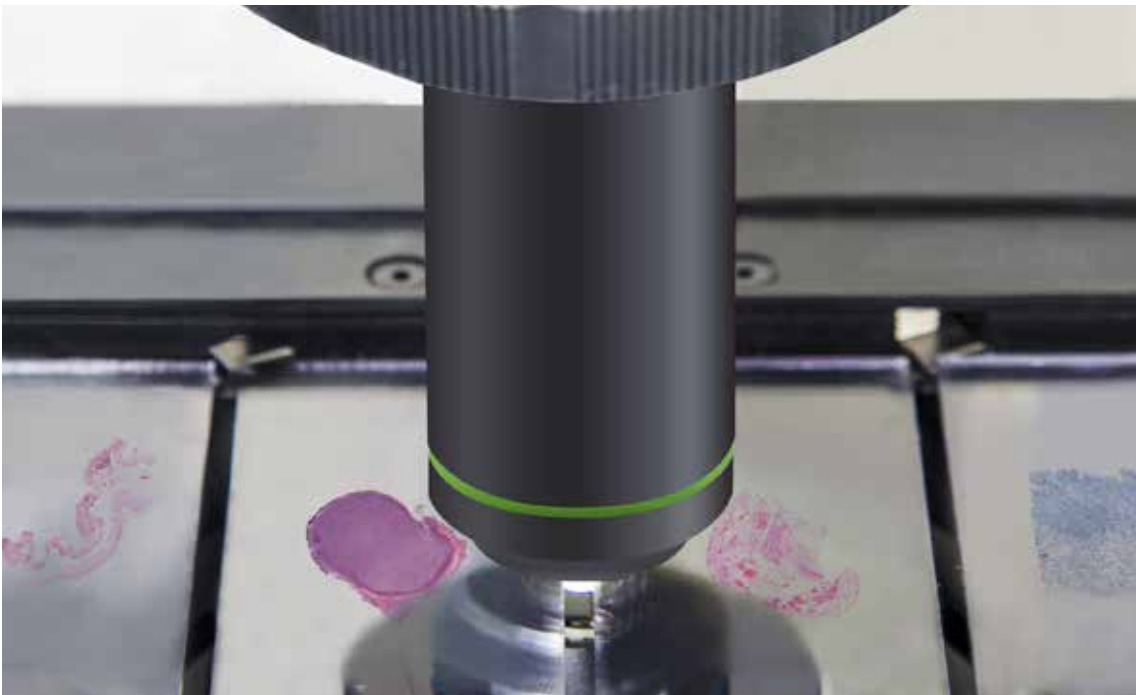


# Digital slide scanners

MT5000 (DSS 1) — Successive slide loading by operator



MT5000 (DSS 4) — Multiple slide loading by operator



# Specifications

	MT5000 (DSS 1)	MT5000 (DSS 4)
<b>Main characteristics</b>		
Slide capacity	1 slide	up to 4 slides
Imaging mode	Brightfield	
Illuminator	Built-in Koehler illumination, LED	
Microscopic slides	Width: 25–26 mm, length: 75–76 mm, thickness: 0.8–1.4 mm	
<b>Scanning</b>		
Scan time (15x15 mm, 20x)	1.5 min	2 min
Objectives	Plan Apochromat 20x/0.75 Plan Apochromat 40x/0.95 (optional) PLN 50x/0.90 Oil (optional) U Plan Achromat 100x/1.25 Oil (optional)	
Objective turret	Yes	
Resolution	Plan Apochromat 20x — 20x/40x: 0.5/0.25 $\mu\text{m}/\text{pixel}$ Plan Apochromat 40x — 40x/80x: 0.25/0.12 $\mu\text{m}/\text{pixel}$ PLN 50x Oil — 70x: 0.15 $\mu\text{m}/\text{pixel}$ immersion EC Plan-Neofluar 40x Oil — 60x: 0.18 $\mu\text{m}/\text{pixel}$ immersion	
Focus	Automatic Extended Range	
<b>Software</b>		
V-Scan	<ul style="list-style-type: none"> <li>— Scanning slide and creating virtual sample</li> <li>— Visualization and storage of digital samples in the database</li> <li>— A professional set of tools to work with digital samples: create, edit, organize, classify and comment</li> <li>— Calculation of geometric parameters in standard measurement units</li> <li>— Automated and manual calculation of optical and geometric parameters of a selected object. Tools to create marks and comments on the digital sample</li> <li>— Remote access and network capabilities</li> </ul>	
<b>Environment</b>		
Power	110–240 V / 50–60 Hz	

We reserve the right to change the specification without notice.

**JAPAN**

322-1, Chikumazawa,  
Miyoshi machi, Iruma-gun  
Saitama 354-0043, Japan  
tel./fax: 049-259-0111/0113  
meiji@meijitechno.co.jp

**EUROPE**

Franz-Siegel-Gasse 1  
2380 Perchtoldsdorf, Austria  
tel.: +43 (1) 804 81 84  
fax: +43 (1) 804 81 85  
info@meijitechno-europe.com

**USA**

5895 Rue Ferrari, San Jose,  
CA 95138, USA  
tel.: (408) 226-3454  
fax: (408) 226-0900  
info@meijitechno.com



[www.meijitechno-europe.com](http://www.meijitechno-europe.com)  
[www.meijitechno.co.jp](http://www.meijitechno.co.jp)