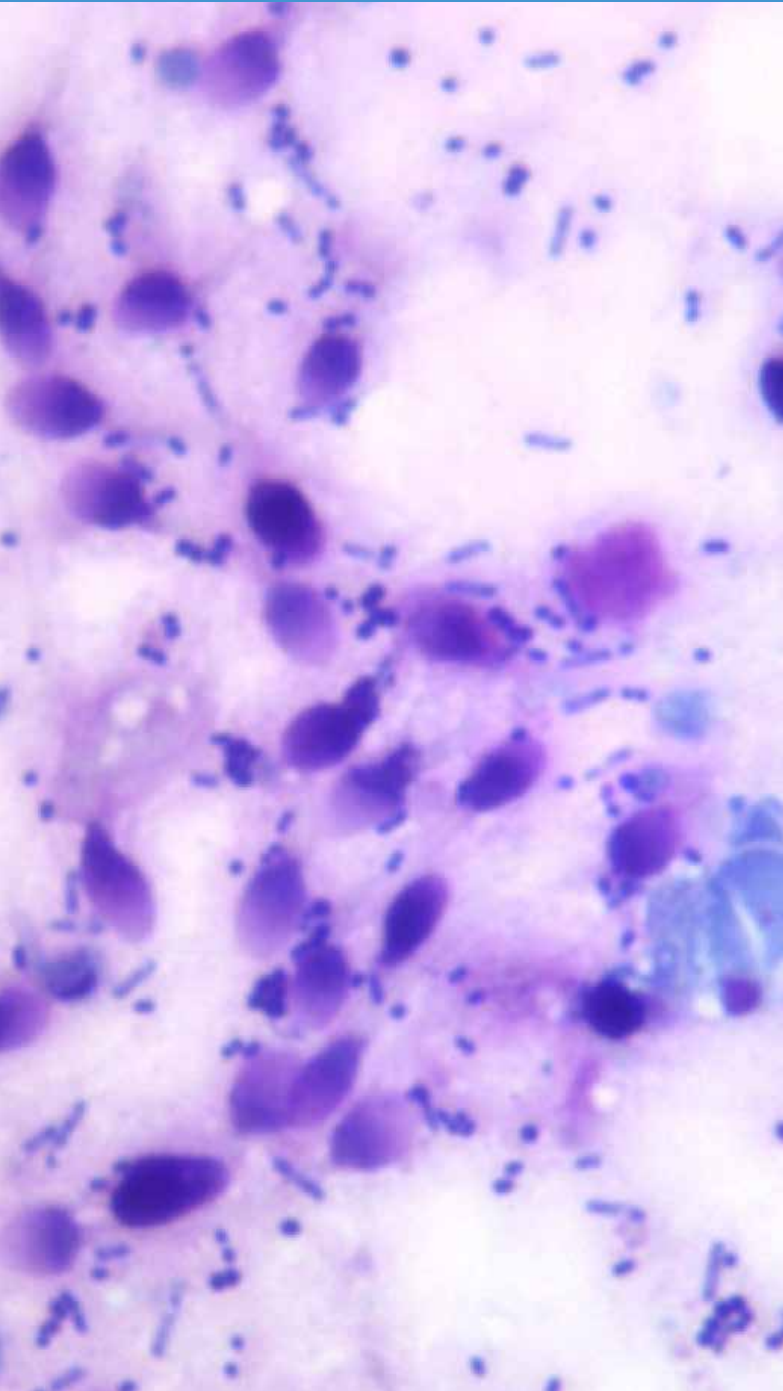


Vision Sperm Sediment[®]

Sperm sediment analysis



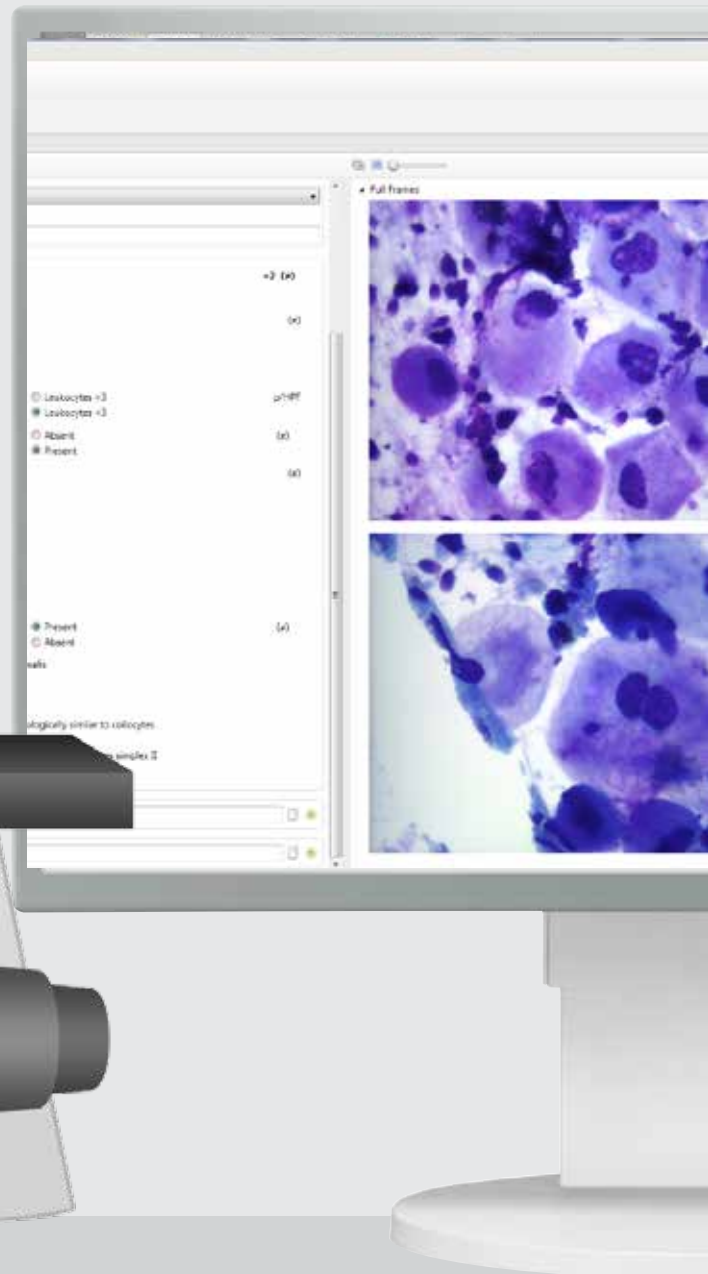
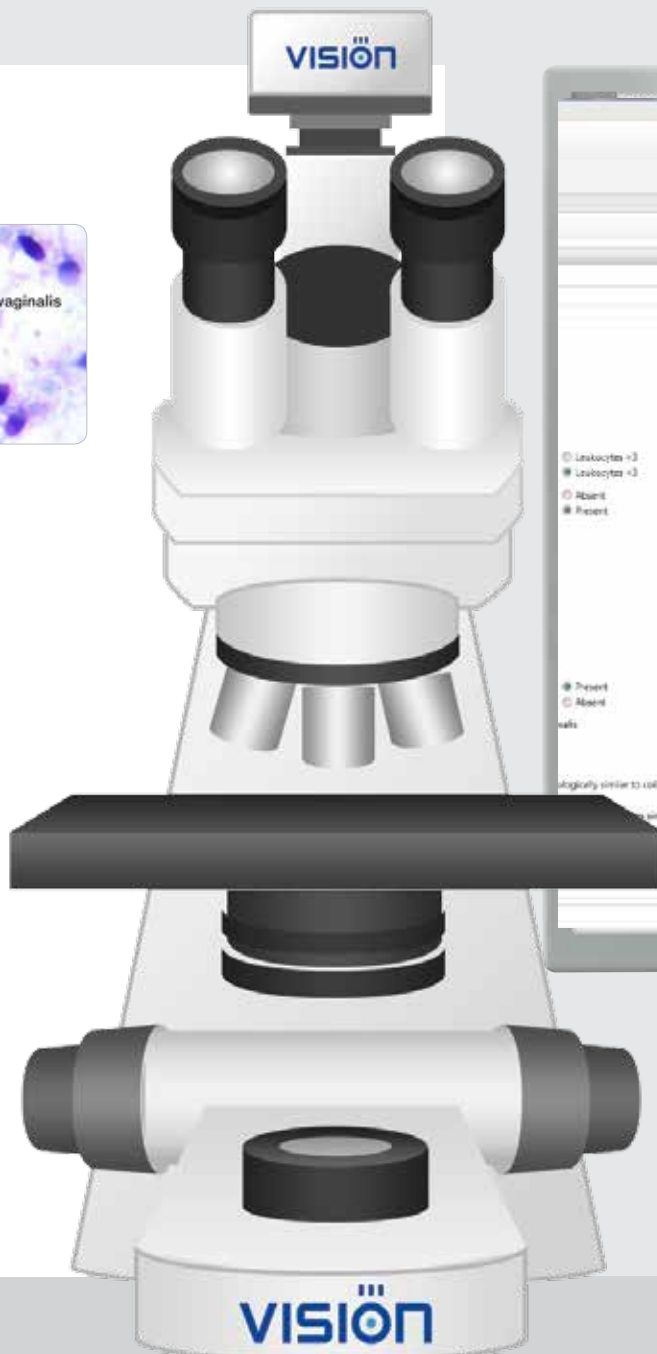
Sperm sediment analysis

Cytological analysis of sperm sediment

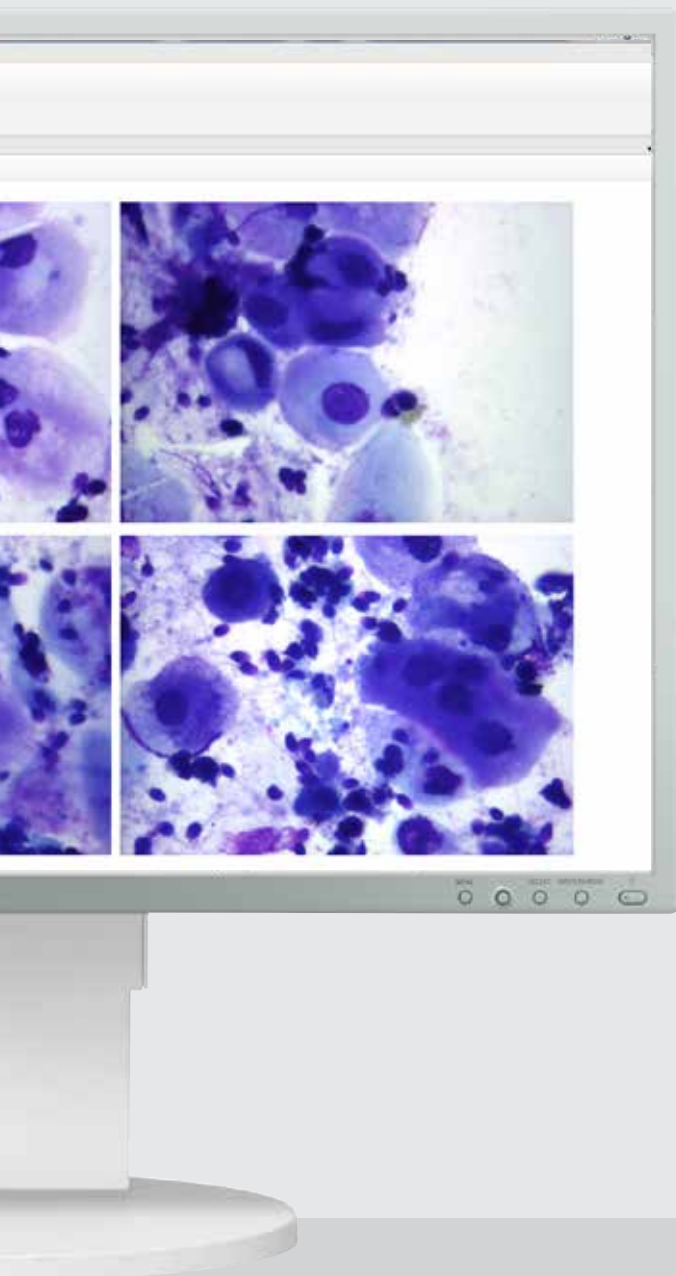


Examination

- latent trichomoniasis
- fungal infections
- HPV infections
- disbiosis



- A pre-set algorithm for analysis of sperm sediment
- Automatic calculation of CSS (*Cytology of Sperm Sediment*) index
- Telemedicine and remote consultations with colleagues
- Database management



A pre-set algorithm for cytology analysis of sperm sediment

Analysis algorithm for examination based on cell's morphological markers

Sample Attributes

Risk Indicators for T.vaginalis =2 (*)

➤ **Macroscopic evaluation of the sample**

Sample background Close-grained (*)
 Granular vitreous
 Vitreous

➤ **Microscopy of the sample**

Inflammatory response evaluation Leukocytes >3 p/HPF
 Leukocytes <3

Related microbiota evaluation Absent (*)
 Present

Polymorphic rod-shaped (*)
 Other

Abundant small coccid
 Abundant mixed
 Leptothrix type bacteria
 Elements of Candida
 L-forms of N.gonorrhoeae
 Other protozoa
 Elements of pathogenic fungus

Presence of cells atypical for semen sediment Present (*)
 Absent

Cells with morphology similar to T.vaginalis
 Other atypical cells

➤ **Other atypical cells**

Squamous epithelium cells morphologically similar to coilocytes
 Debride type cells
 Multinucleated cells morphologically similar to Herpes simplex II
 Cells with alterations typical for a virus infection

Result Interpretation

Notes

Specification

	General characteristics
Working modes	scanning of cytology sperm sediment samples
Simultaneous loading	1 slide
Slide handling	manual, successive
Optical system	4x, 10x, 40x, 100x oil
Validation	according to the pre-set cytology algorithm
Microscopic slides	standard 75x25 mm, 1.1 mm thick
Communication	bi-directional LIS, LIS2-A2 (ASTM), HL7, Ethernet
Multiple user access	4 pre-set types of users: Administrator, Doctor, Technician, Receptionist; new types of users can be added; adjustable access rights for users
Database	multiple systems can share one database; archiving of results via transfer to external storage media
Software	<p>Vision Sperm® Sediment</p> <ul style="list-style-type: none"> — allows to specialists to easily analysis latent trichomoniasis, fungal, HPV infections, disbiosis and etc. — reported results based on cell's morphological markers — automatic calculation of CSS index — capture of required fields of view — creation of cytology sample gallery — database for achive management — remote access and network capabilities

* Product images are shown for reference only and final product may differ

