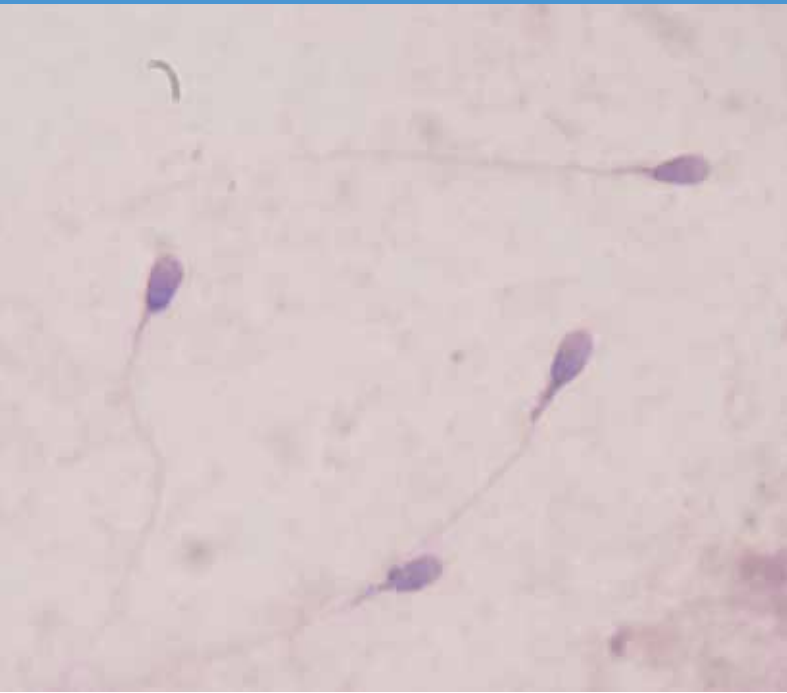


Vision Sperm[®] Basic

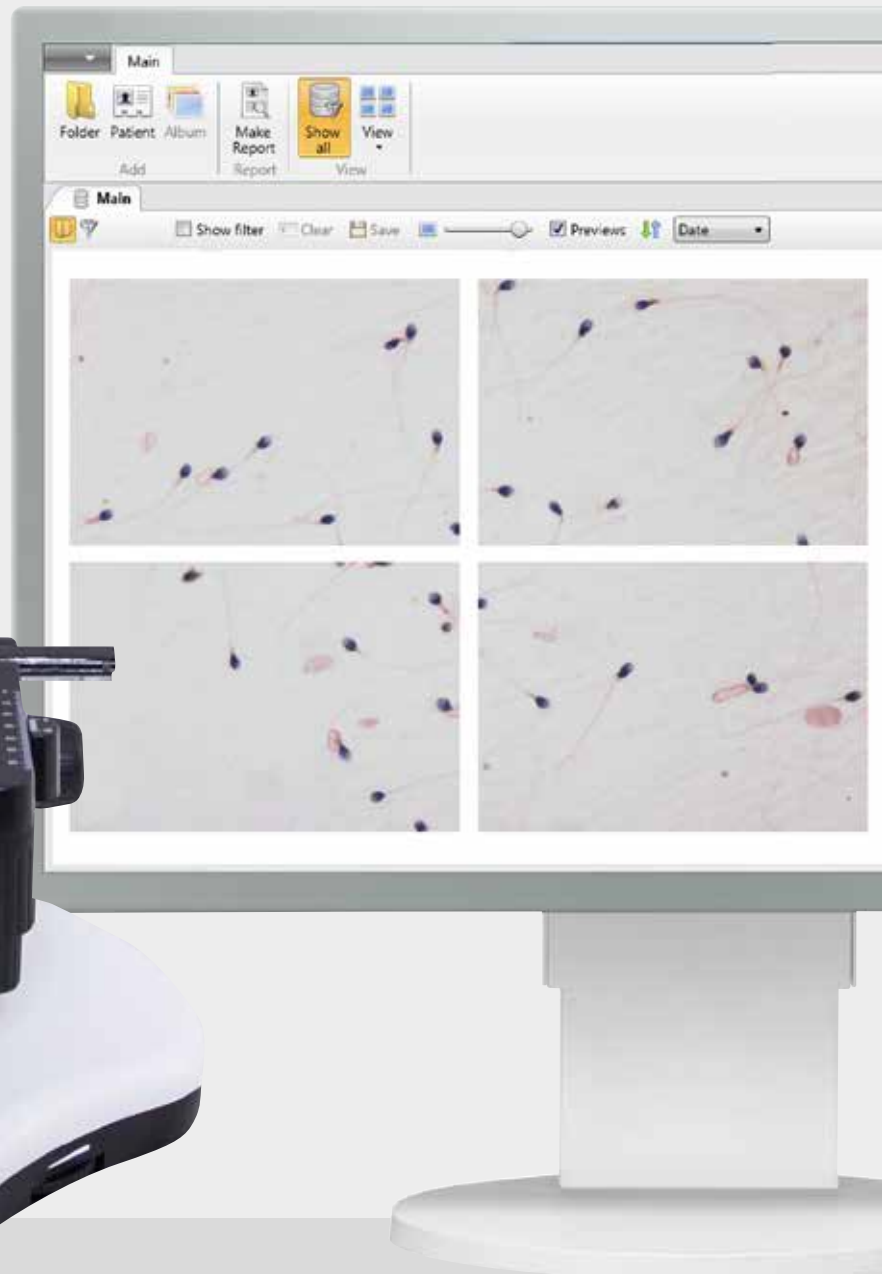
Modern solution
for sperm analysis



Vision Sperm® Basic

Sperm microscopy system

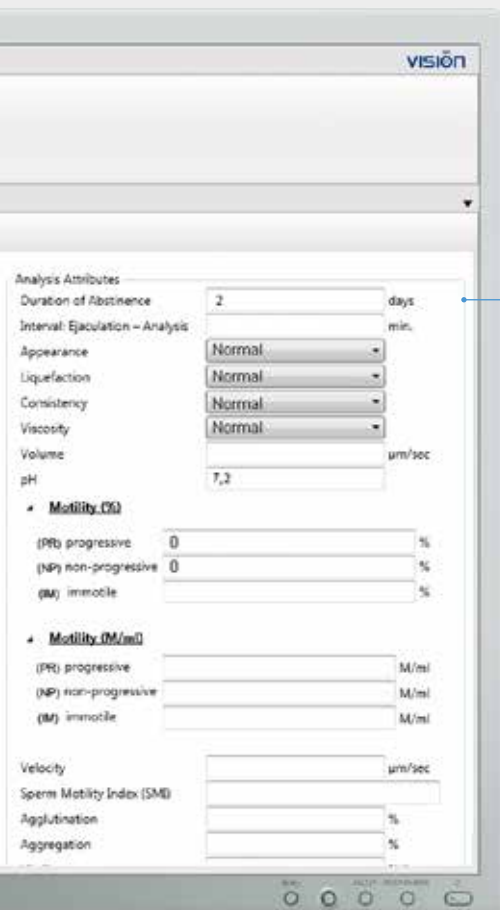
Organization and interpretation of sperm morphology analysis



- Excellent image of sperm samples due to camera with high resolution
- Analysis and classification of semen samples microscopy images
- Semen objects atlas for identification, especially in difficult cases
- Database and archive management

Preset algorithm of sperm analysis by WHO

Indispensable assistant offers a researcher the standardized algorithm of sperm analysis.



Analysis Attributes		
Duration of Abstinence	2	days
Interval: Ejaculation - Analysis		min.
Appearance	Normal	
Liquefaction	Normal	
Consistency	Normal	
Viscosity	Normal	
Volume		µm/sec
pH	7,2	
▲ Motility (%)		
(PR) progressive	0	%
(NP) non-progressive	0	%
(IM) immotile		%
▲ Motility (M/ml)		
(PR) progressive		M/ml
(NP) non-progressive		M/ml
(IM) immotile		M/ml
Velocity		µm/sec
Sperm Motility Index (SMI)		
Agglutination		%
Aggregation		%
Vitality		% live
Concentration		M/ml
Total Sperm Number		
▲ Morphology		
Normal	15,4	%
Head Defects	42,3	%
Neck or Midpiece Defects	29,3	%
Tail Defects	24,7	%
Cytoplasmic Defects	43,5	%
Functional Sperm Concentration (FSC)		
Teratozoospermia Index (TZI)		
White Blood Cells (WBC)		M/ml
Red Blood Cells (RBC)		M/ml
Immature Germ Cells		M/ml
Immunobead / MAR test		%
MAR test		%
▲ Biochemistry		
Zinc		mmol/l
Fructose		mmol/l
α-glucosidase neutral		U/l
Citric acid		mmol/l

Vision Sperm® Basic

Systems for microscopy examination of semen

- Sperm microscopy and capture of a superior quality digital sample
- Preset algorithm of sperm analysis by WHO
- Analysis, measurement and classification of semen samples microscopy images
- Convenient organization and professional tools
- Creating reports according to the modern requirements
- Marks and comments
- Remote access to share data with colleagues
- Improved quality of work
- Ergonomically correct workstation



Manual staining systems



V-Chromer® Mini I — Manual stainer for microscopic samples

- Use reagents of various manufacturers
- Autoclavable
- Resistance to chemicals substances and stains
- Only 80 ml of reagent are used
- Reagent are protected from evaporation; presence of caps on containers and sample holders

Ordering information

Systems for microscopy examination of semen	
Vision Sperm® Basic / Primary set Set includes: MX300T microscope, Vision CAM® V1200S (C) digital camera, Vision Sperm® Basic software <i>Use your personal computer*</i>	60.0009.01
Vision Sperm® Basic / Initial set Set includes: Vision CAM® V1200S (C) digital camera, Vision Sperm® Basic software <i>Use your personal computer* and microscope**</i>	60.0009.02
Manual staining systems	
V-Chromer® Mini I Manual stainer with 4 positions	80.0007.01

* Minimal PC requirements: Intel Core i5, 4 GB RAM, 1 TB HDD, Windows 7, 1920x1080 screen resolution, 23" monitor

** Microscope requirements: photo/video output, C-Mount adapter, "Infinite" optics, Plan Achromat objectives

* Product images are shown for reference only and final product may differ



VISION

www.wm-vision.com

Franz-Siegel-Gasse 1
2380 Perchtoldsdorf, Austria
tel.: +43 (1) 804 81 84
fax: +43 (1) 804 81 85
vienna@westmedica.com



www.westmedica.com