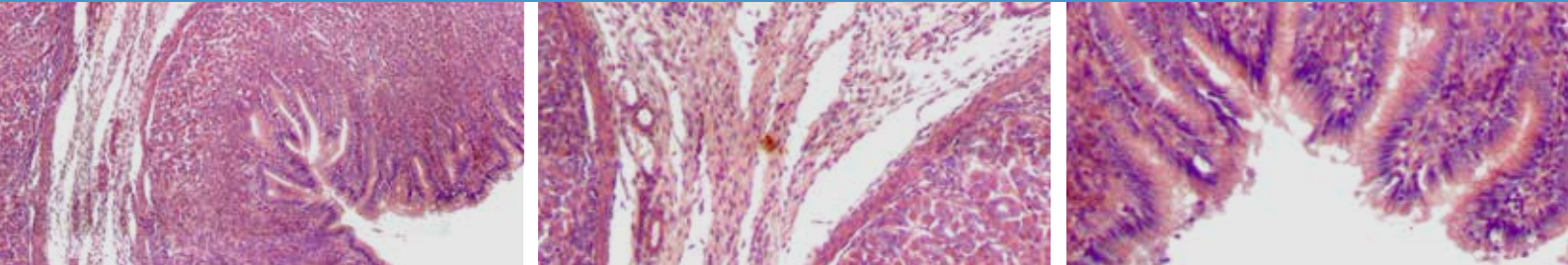


Vision Slide®

Digital slide scanners



Fast scanning. Capturing the image of complete slide area.

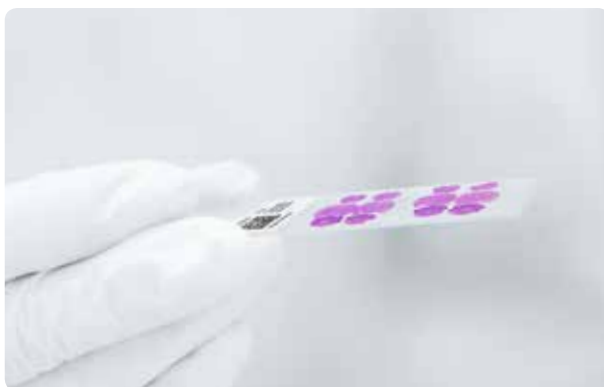
For digital pathology, research and education

Simultaneous loading from 1 to 200 slides

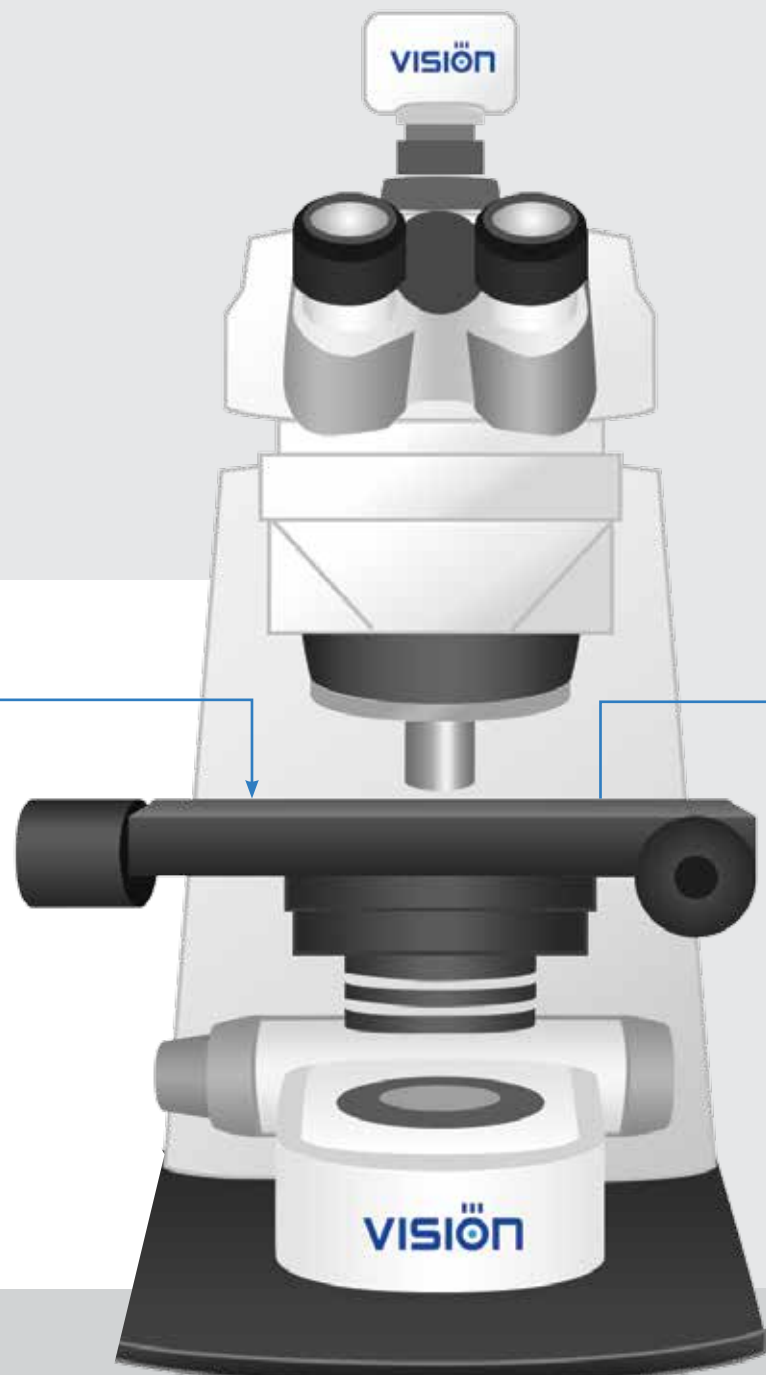
Automatic or manual slide handling

Creating virtual sample

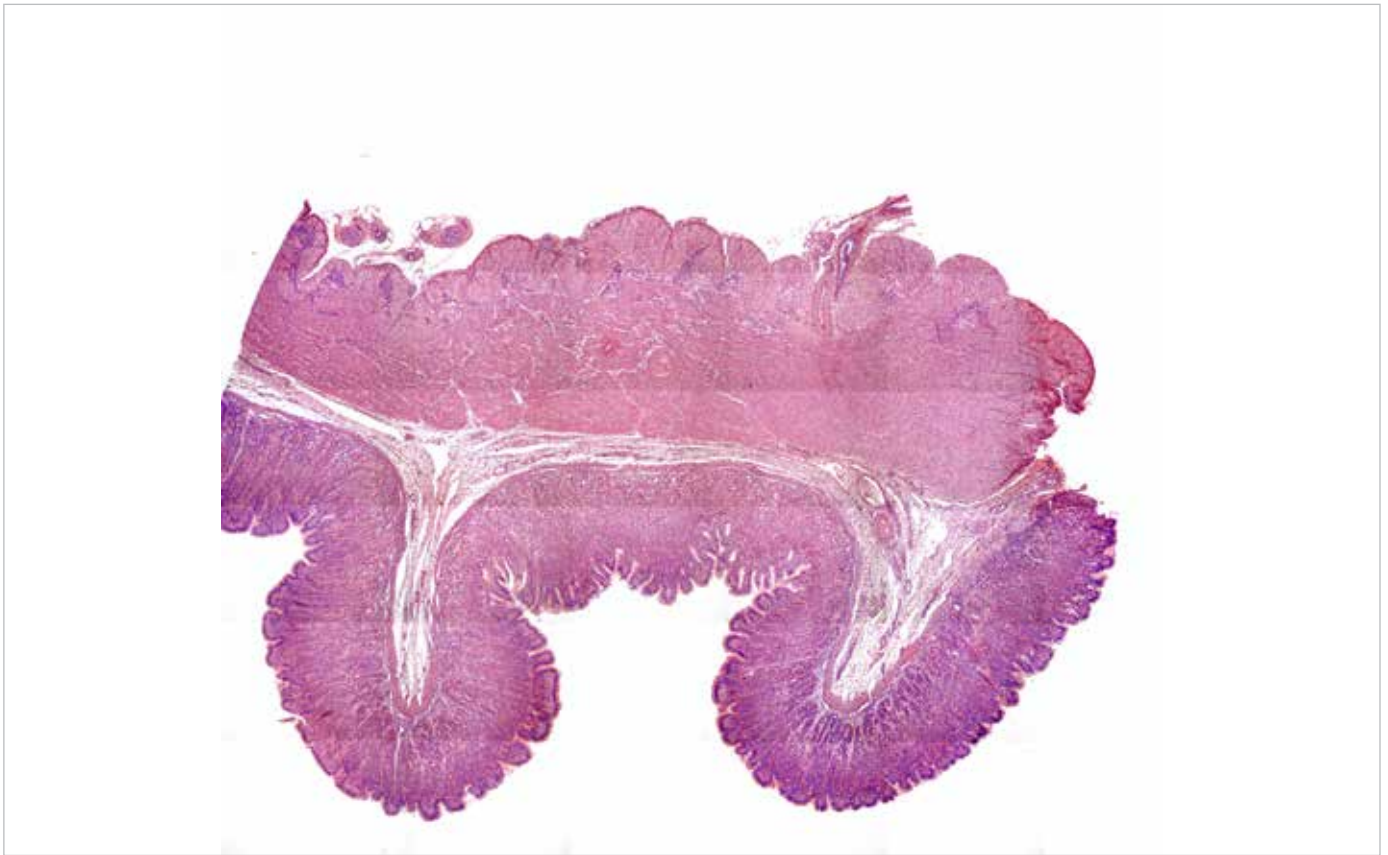
Focus: automatic, extended, range



Works with standard
75x25 mm slides

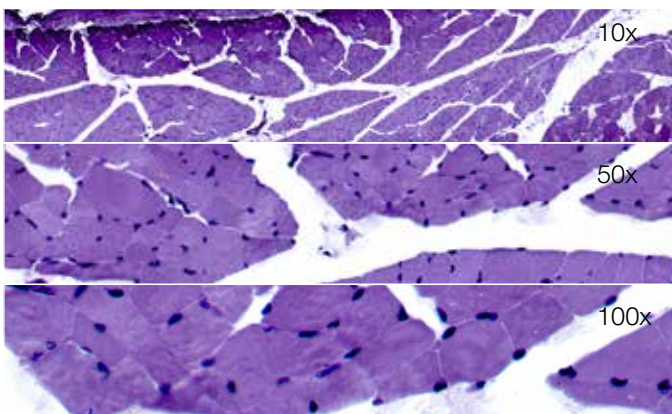


Main features

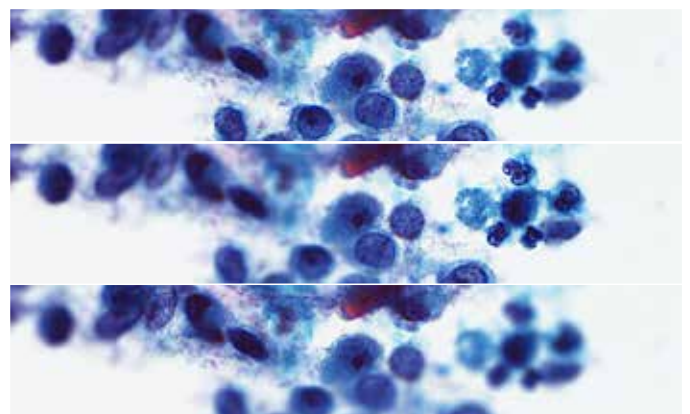


Panoramic images of complete slide area

Creation of high quality digital slides. Exceptional quality, high definition and accurate color rendition thanks to Plan Apochromate objectives.

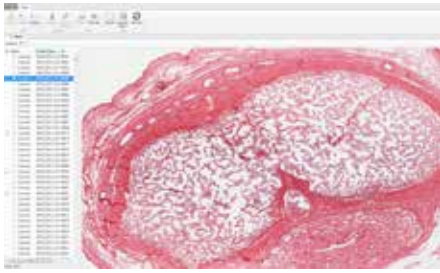


Additional magnifications

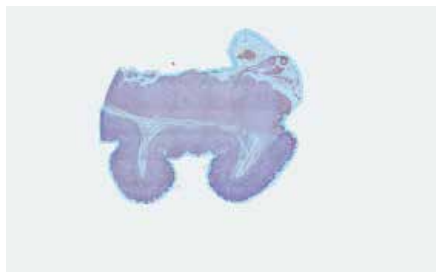


Extended focus

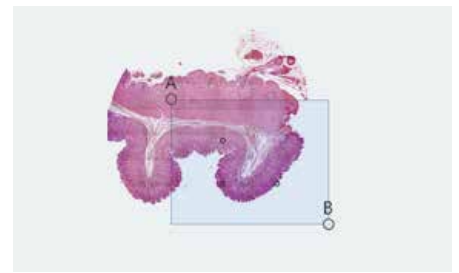
Vision Slide[®] software



Database for archive management



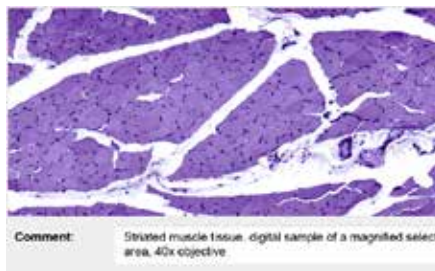
Autodetection of scanning area



Adjustable size of scanning area



Working with images: select, edit, marks and text comments



Comments to digital sample image



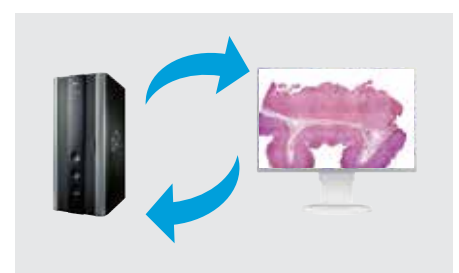
Education and professional development



Telemedicine and remote consultations



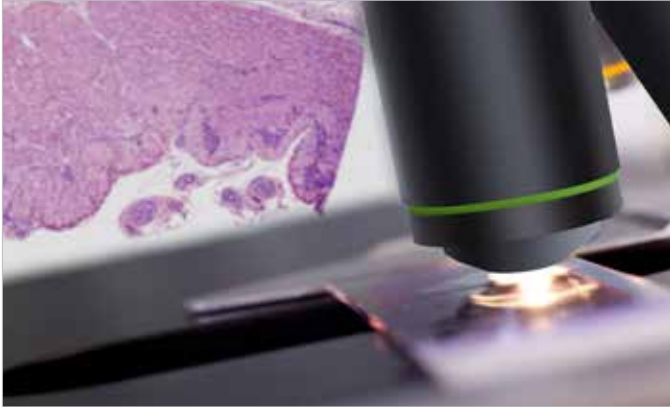
Remote access



Bi-directional communication with LIS

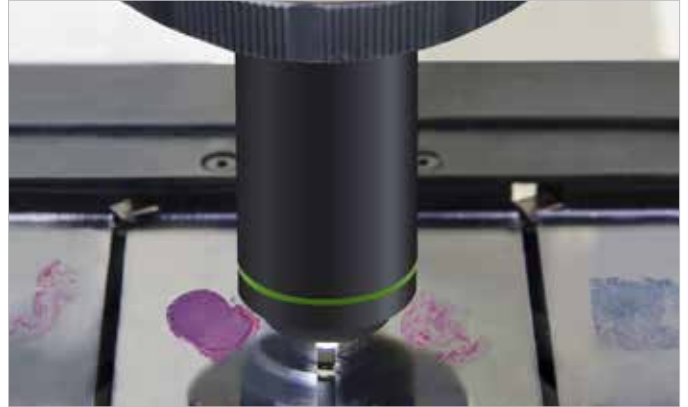
Digital slide scanners

Vision Slide® Assist



Successive slide loading by operator

Vision Slide® 4Pro



Multiple slide loading by operator

Vision Slide® 8Pro



Slide tray loading

Vision Slide® Ultimate



Loading of up to 200 slides simultaneously

Specifications

	Vision Slide® Assist	Vision Slide® 4Pro	Vision Slide® 8Pro	Vision Slide® Ultimate
Main characteristics				
Slide capacity	1	up to 4 slides	up to 8 slides	up to 200 slides
Slide handling	Manual	Manual	Slide tray	Automated
Slide identification	Manual	Manual	Manual/Automated	Automated
Imaging mode	Brightfield			
Illuminator	Built-in Koehler illumination, LED			
Microscopic slides	Width: 25–26 mm, length: 75–76 mm, thickness: 0.8–1.4 mm			
Scanning				
Scan time (15x15 mm, 20x)	1.5 min	2 min	1.5 min	1.5 min
Objectives	Plan Achromat 20x/0.75 Plan Achromat 40x/0.95 (optional)		Plan Achromat 20x/0,80 Plan Achromat 40x/0,95 (optional)	
Objective turret	Yes			
Resolution	Plan Achromat 20x — 20x/40x: 0.5/0.25 µm/pixel Plan Achromat 40x — 40x/80x: 0.25/0.12 µm/pixel			
Focus	Automatic Extended Range			
Software				
Vision Slide®	<ul style="list-style-type: none"> — Scanning slide and creating virtual sample — Visualization and storage of digital samples in the database — A professional set of tools to work with digital samples: create, edit, organize, classify and comment — Calculation of geometric parameters in standard measurement units — Automated and manual calculation of optical and geometric parameters of a selected object. Tools to create marks and comments on the digital sample — Remote access and network capabilities 			
Environment				
Power	110–240 V / 50–60 Hz			



* Product images are shown for reference only and final product may differ

Rev 7.0/06.2017 EN



VISION

www.wm-vision.com

Franz-Siegel-Gasse 1
2380 Perchtoldsdorf, Austria
tel.: +43 (1) 804 81 84
fax: +43 (1) 804 81 85
vienna@westmedica.com



www.westmedica.com