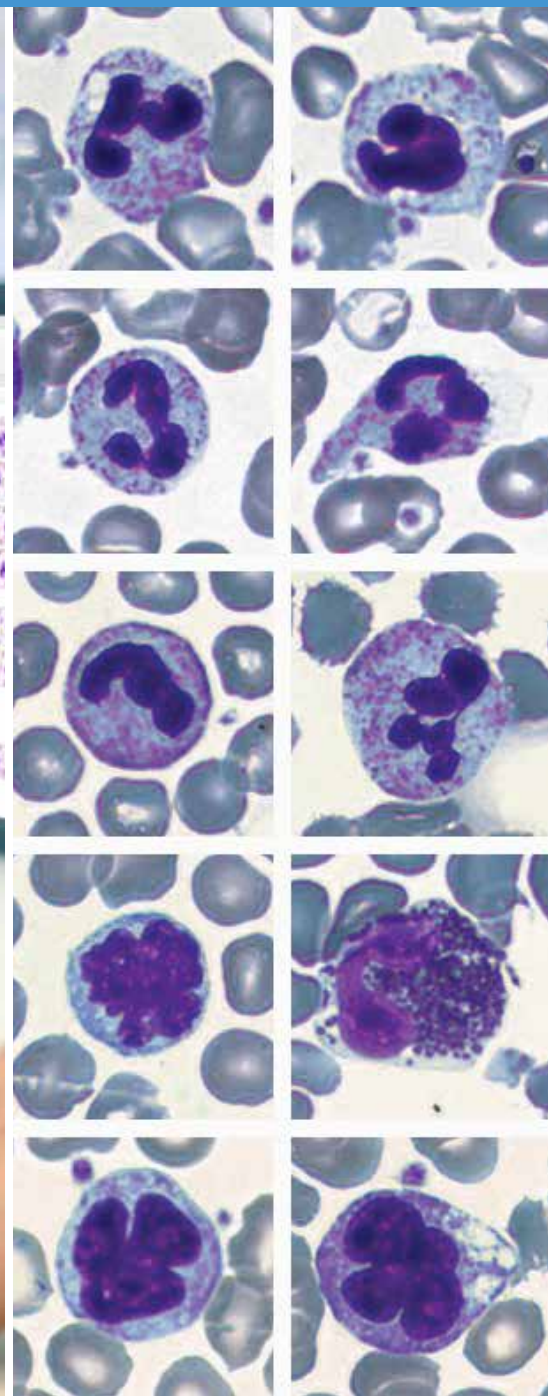


# Vision Hema<sup>®</sup> products workflow

Efficient and professional solution  
for hematology laboratory



# 1

## Screening

1



### Screening

Performed on hematology analyzer for screening. Samples with «flags» are sent for microscopy.

2

Lala	Connish	29.01.2013 09:25	0000001
Perry	Unger	29.01.2013 09:45	0000002
Geir	Telle	29.01.2013 10:05	0000003
Ellis	Salinas	29.01.2013 10:25	0000004
Madeline	Evens	29.01.2013 10:45	0000005
Harris	Rhoads	29.01.2013 11:05	0000006

### Data transfer

Results are automatically transferred to your PC and integrated in CBC report.

# 2

## Standardization and automation of blood smear preparation

1



### Blood mixing

Thorough mixing is achieved by constant spinning using **V-Mixer**<sup>®</sup> hematology mixer.

2



### Barcode printing

Using **V-Printer**<sup>®</sup>, print barcodes with all the necessary information right on the slide or a sticker.

3



### Slide preparation

Preparation of standardized high quality blood smears, using **V-Sampler**<sup>®</sup>.

4



### Slide staining

Strict compliance with May-Günwald-Giemsa staining protocol is achieved with the help of **V-Chromer**<sup>®</sup> automated slide stainer for blood smears.



**V-Mixer**<sup>®</sup>  
Hematology mixer



**V-Printer**<sup>®</sup>  
Barcode printer



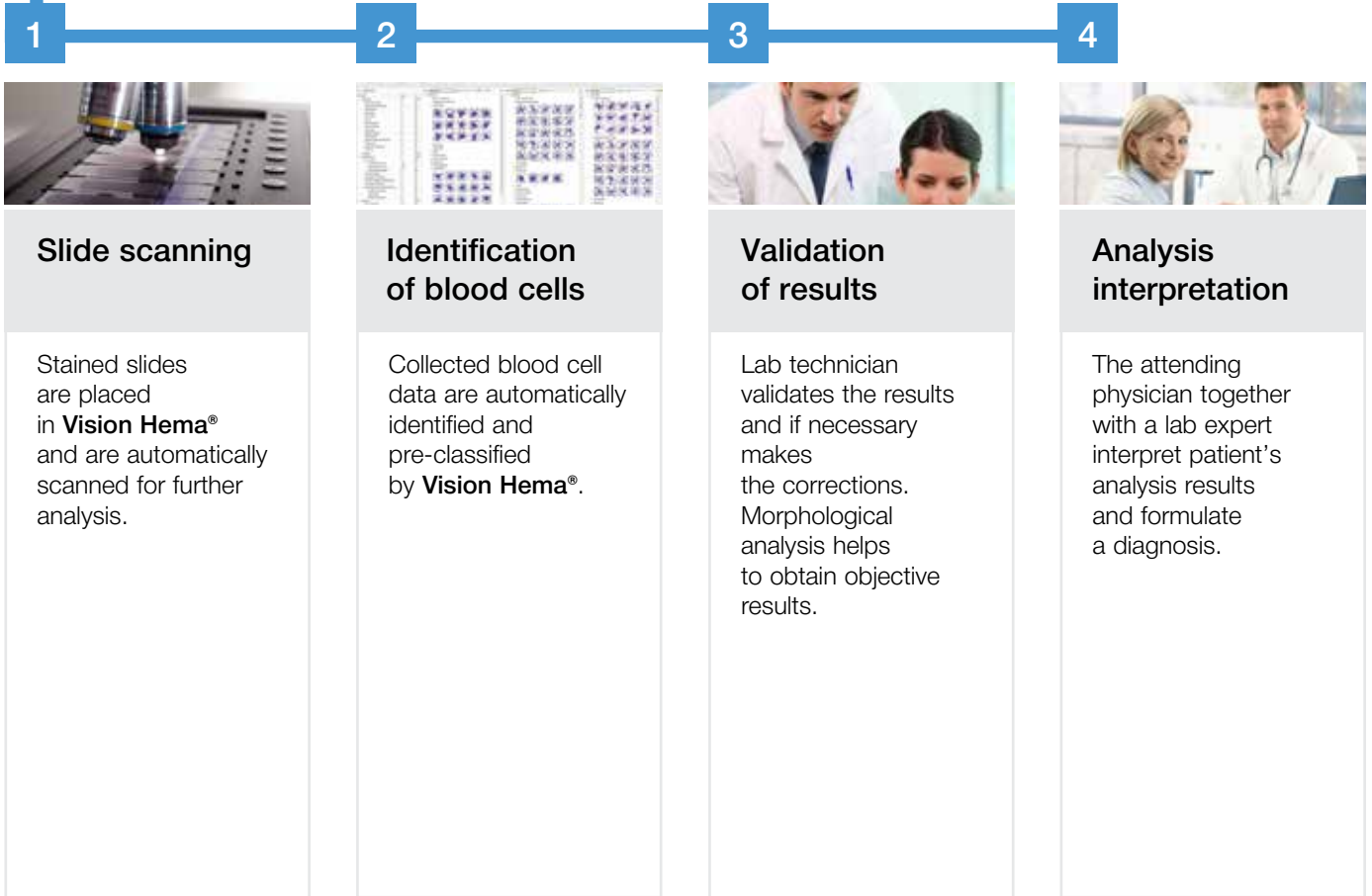
**V-Sampler**<sup>®</sup>  
Hematology sampler



**V-Chromer**<sup>®</sup>  
Automated slide stainer

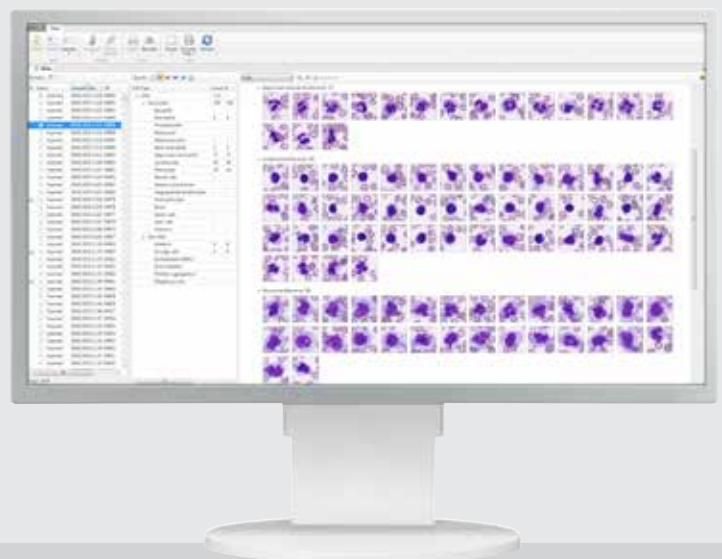
# 3

## Digital blood cell morphology

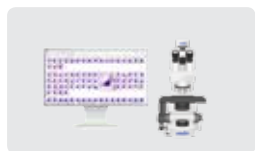


### Vision Hema® Hematology imaging analyzer

- Identification, pre-classification and validation of blood cells
- Workflow automation and standardization
- Improved quality and increased productivity
- Efficient use of time and correct ergonomics
- Continuous professional development of lab technicians
- Benefit from knowledge and experience of your colleagues
- Internet and network capabilities

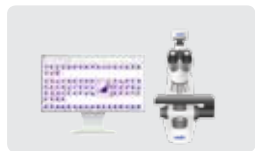


## Automated hematology imaging analyzers



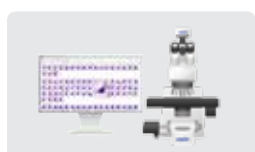
### Vision Hema® Assist

- Automatic scanning
- Identification and pre-classification of blood cells
- Quick verification of results
- Morphology analysis
- Successive slide loading by operator



### Vision Hema® 4Pro

- Automatic scanning
- Identification and pre-classification of blood cells
- Morphology analysis
- Loading up to 4 slides simultaneously
- Walk away mode — scanning series of slides



### Vision Hema® 4Pro

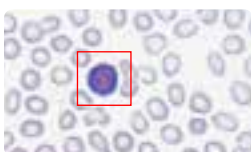
- Automatic scanning
- Identification and pre-classification of blood cells
- Morphology analysis
- Loading up to 4 slides simultaneously
- Walk away mode — scanning series of slides



### Vision Hema® Ultimate

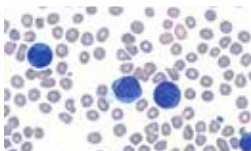
- Automatic scanning
- Loading up to 200 slides simultaneously, automatic slide loader
- Walk away mode — scanning series of slides
- Random Access and STAT testing
- Continuous loading mode

## Semi-automated hematology imaging analyzers



### Vision Hema® Basic

- Identification, pre-classification and validation of blood cells
- Successive slide loading by operator
- Manual blood cell image capture



### Vision Hema® Basic AF

- Identification, pre-classification and validation of blood cells
- Successive slide loading by operator
- Autofocus and manual blood cell capture

\* Product images are shown for reference only and final product may differ

