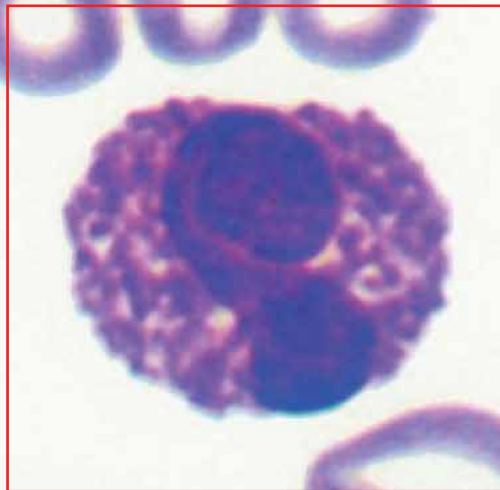


Vision Hema[®] Vet Basic / Basic AF

Animal blood cell image analysis



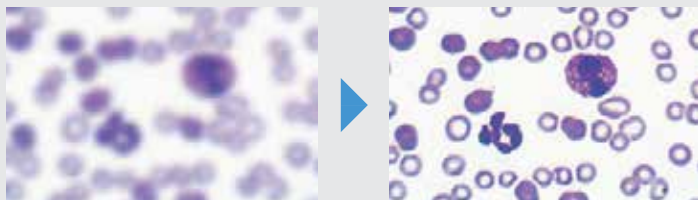
Affordable solution for every veterinary laboratory

Standardization of analysis results. Documented analysis of a blood smear. Accurate results. Load reduction on personnel. Enhancement of professional skills and exchange of experiences.

Combination of innovative technology and classical microscopy extends working possibilities

Autofocus*

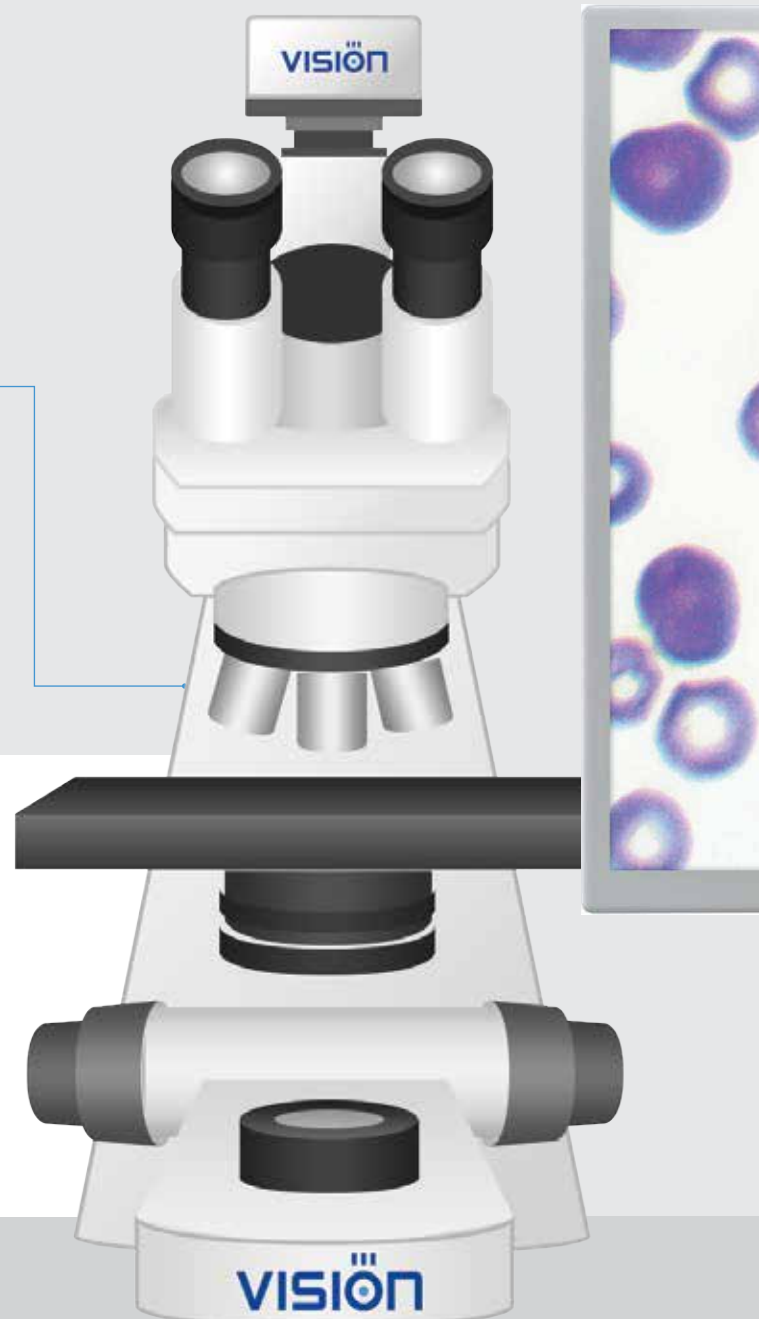
Autofocus ensures automatic focusing of the lens.



Manual scanning procedure

1. Select the number of cells required for analysis.
2. Move the stage, focusing on the blood cells.
3. Capture the desired images of blood cells (leucocytes, erythrocytes, platelet).
4. Once the desired number of blood cells is collected, the system will start to identify and pre-classify.

* Autofocus is available only for Vision Hema® Vet Basic AF

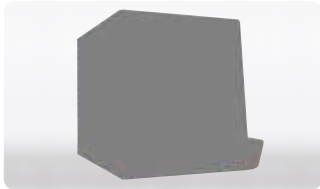


Blood analysis stages

1

Screening

Efficient and economical examination.



Your veterinary hematology analyzer

Hematology analyzer.

2

Pre-analytical stage

Standardization and automation of blood smear preparation.



V-Mixer® hematology mixer

Thorough mixing is achieved by constant spinning.



V-Sampler® hematology sampler

High quality blood smears.



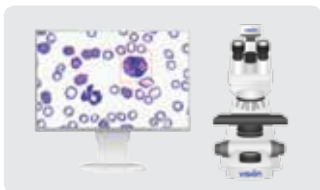
V-Chromer® Mini I manual slide stainer for blood smears

Strict compliance with May-Grünwald Giemsa staining.

3

Analytical stage

Blood cell capture and analysis.



Vision Hema® Vet Basic

Affordable solution for every veterinary laboratory.

- Identification, pre-classification and validation of animals blood cells
- Study standardization
- Documented analysis of a blood smear
- Significant workload reduction on personnel

* Product images are shown for reference only and final product may differ

