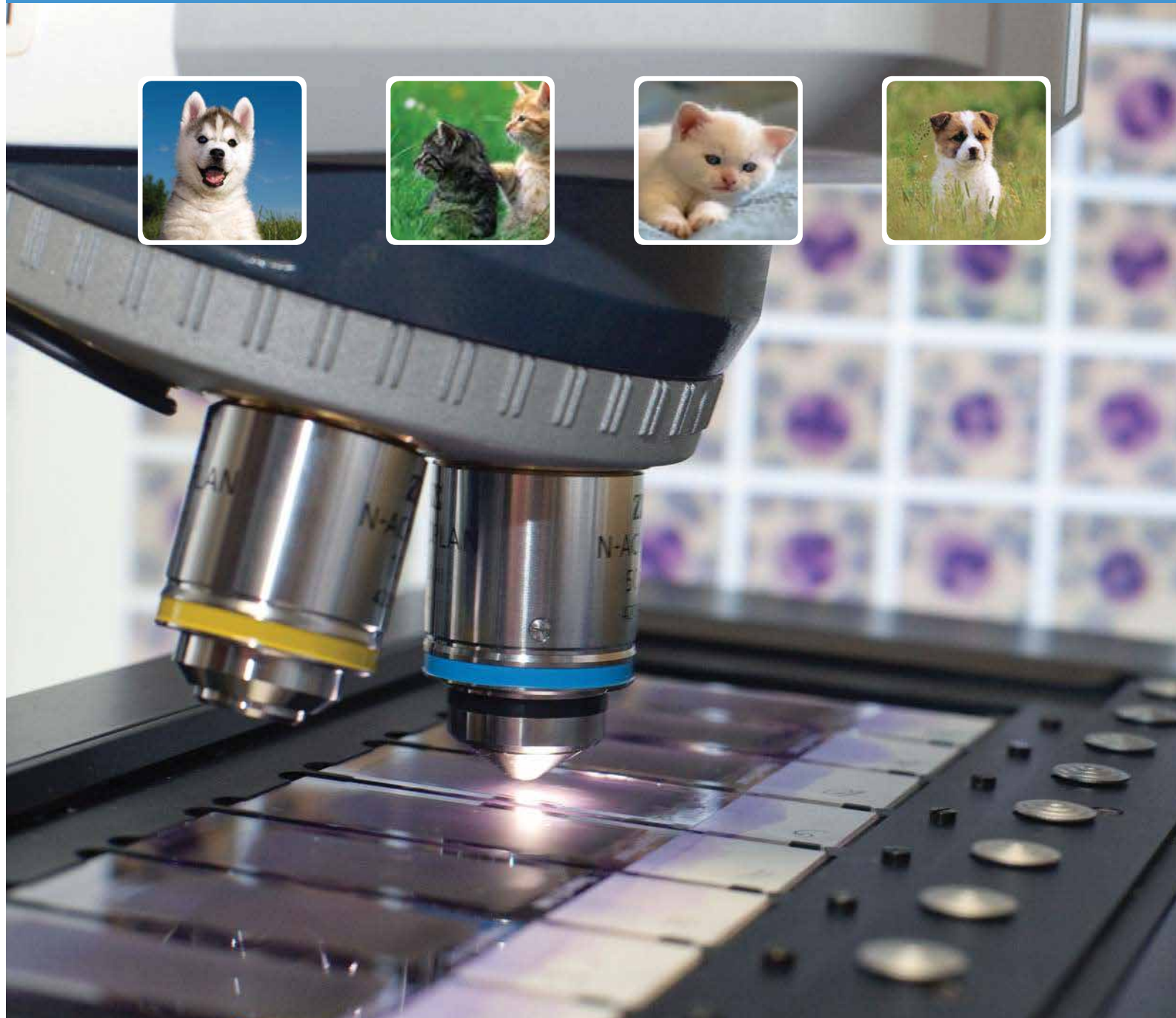


# Vision Hema<sup>®</sup> Vet 8Pro

## Animal blood cell image analysis



# Efficient and professional solution for veterinary laboratory

Workflow automation and standardization. Improved quality and increased productivity. Time efficiency.

Combination of innovative technology and classical microscopy extends working possibilities

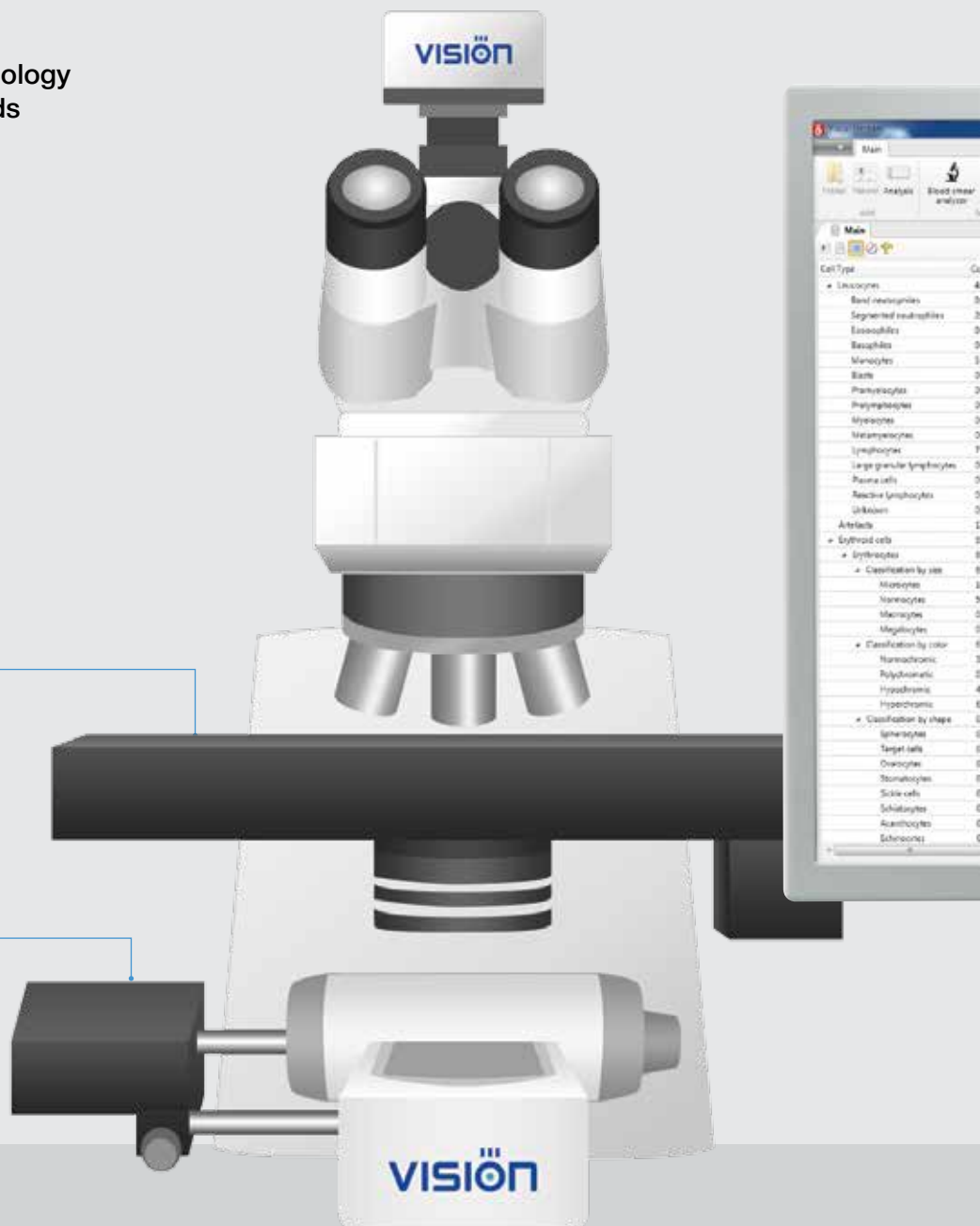


## Slide tray loading

The constant presence of an operator is not required. Load the slide tray and pay more attention to other important work processes.

## Motorization

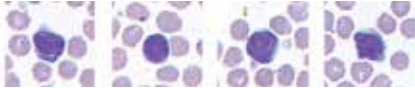
Strict adherence to the movements of a motorized stage ensures high accuracy and reproducibility of results.



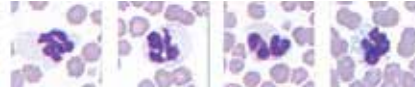
## Blood cell image analysis



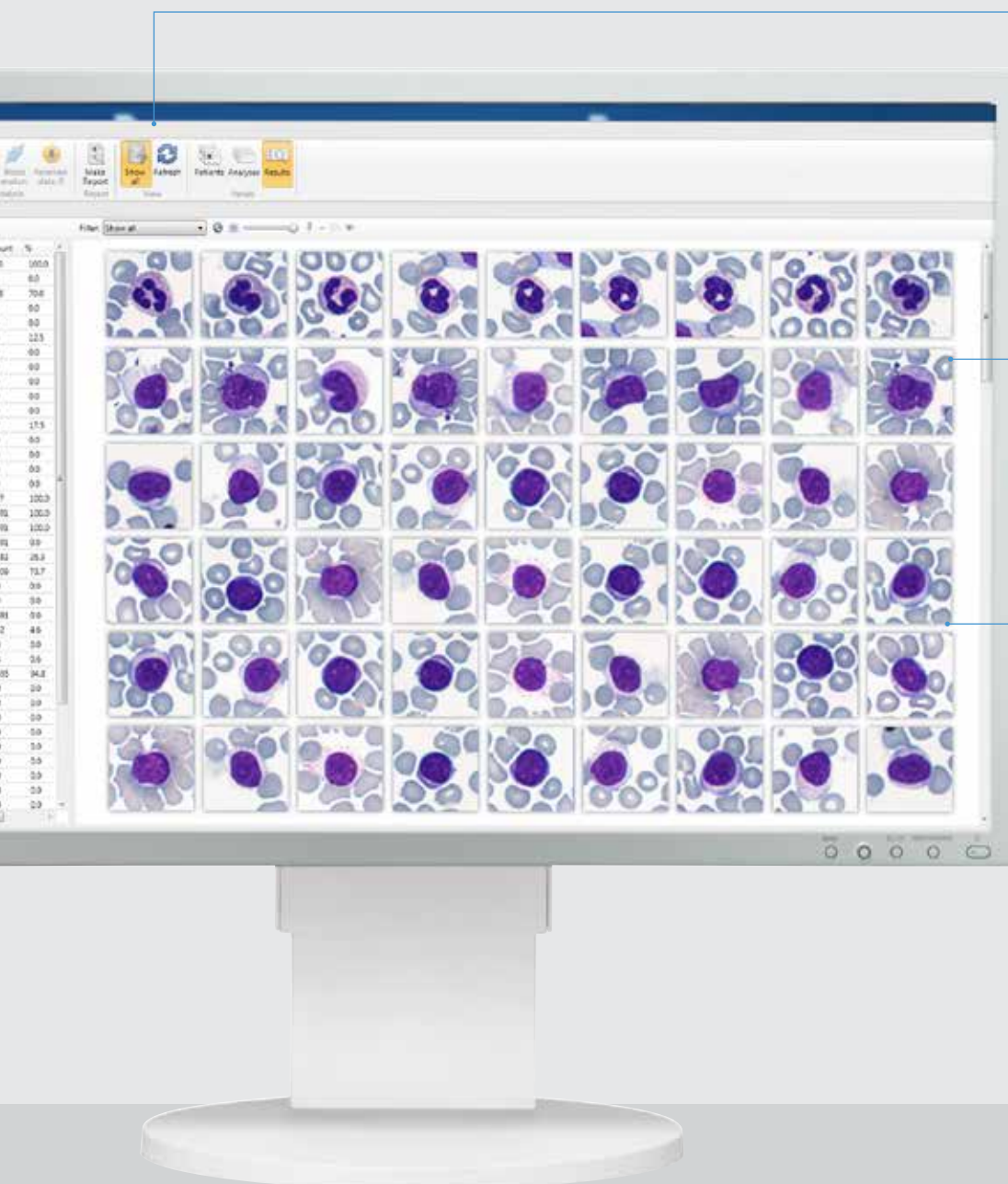
Dogs



Cats



Blood cell image analysis of other animals is on request



- **Main toolbar**

Basic working tools for managing patient records and analysis results. The toolbar has minimal size to retain space for working with images.

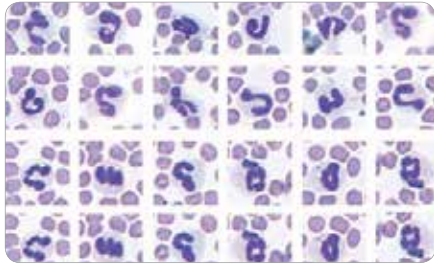
- **Blood cell images**

Identified and pre-classified blood cells are placed in a gallery and organized in groups.

- **Multi-gallery**

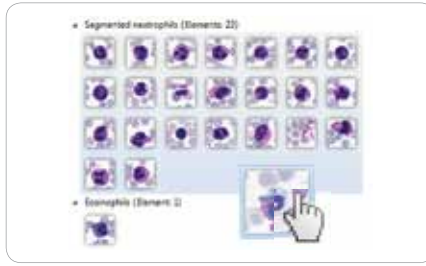
Galleries of blood cell subpopulations are selected by the user for analysis.

# Optimal solution for laboratories



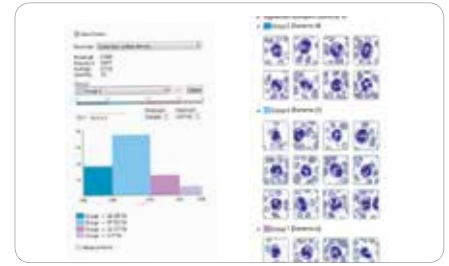
## Automatic scanning, identification and pre-classification

Vision Hema<sup>®</sup> automatically scans a microscopic sample, collects data for analysis, sorts blood cells and saves results in the database.



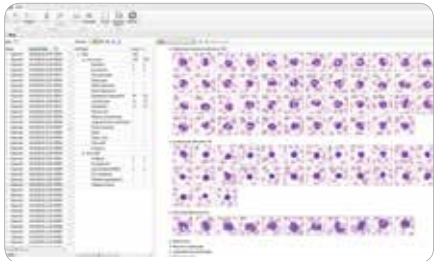
## Validation of WBC, RBC and platelets

The specialist is free from routine monotonous work. Analysis results are displayed in galleries of cells and arranged in groups. All you need to do is review and verify the results.



## Morphological analysis

Classify analysed objects using required criteria to generate a report. Select a required number of groups and define a measurement range for each one of them.



## Database for archive keeping

The system saves all data automatically, excluding any possibility of losing valuable information. Advanced data management tools, like filtering and sorting, will help you not to waste time on searching.



## Remote access and network capabilities

Data exchange with LIS/HIS. Storage of blood cell images and reports in the database allows the organization of an information network for the medical institution. Your colleagues can review analysis results, while at any working place.



## Education and professional development

By working with Vision Hema<sup>®</sup> system, specialists and technicians improve their expertise every day, thanks to the use of atlas, review of blood cell images and comments as well as discussion with colleagues and experts.

\* Product images are shown for reference only and final product may differ



**VISION**

[www.wm-vision.com](http://www.wm-vision.com)

Franz-Siegel-Gasse 1  
2380 Perchtoldsdorf, Austria  
tel.: +43 (1) 804 81 84  
fax: +43 (1) 804 81 85  
[vienna@westmedica.com](mailto:vienna@westmedica.com)

