

## Vision Hema<sup>®</sup> RET

Identification and pre-classification  
of reticulocytes

# Identification and pre-classification of reticulocytes

## Innovative solution for the study of reticulocytes

### Reticulocytes

Reticulocytes — young erythrocytes that appear in the bone marrow and are present in the blood in minor quantities.



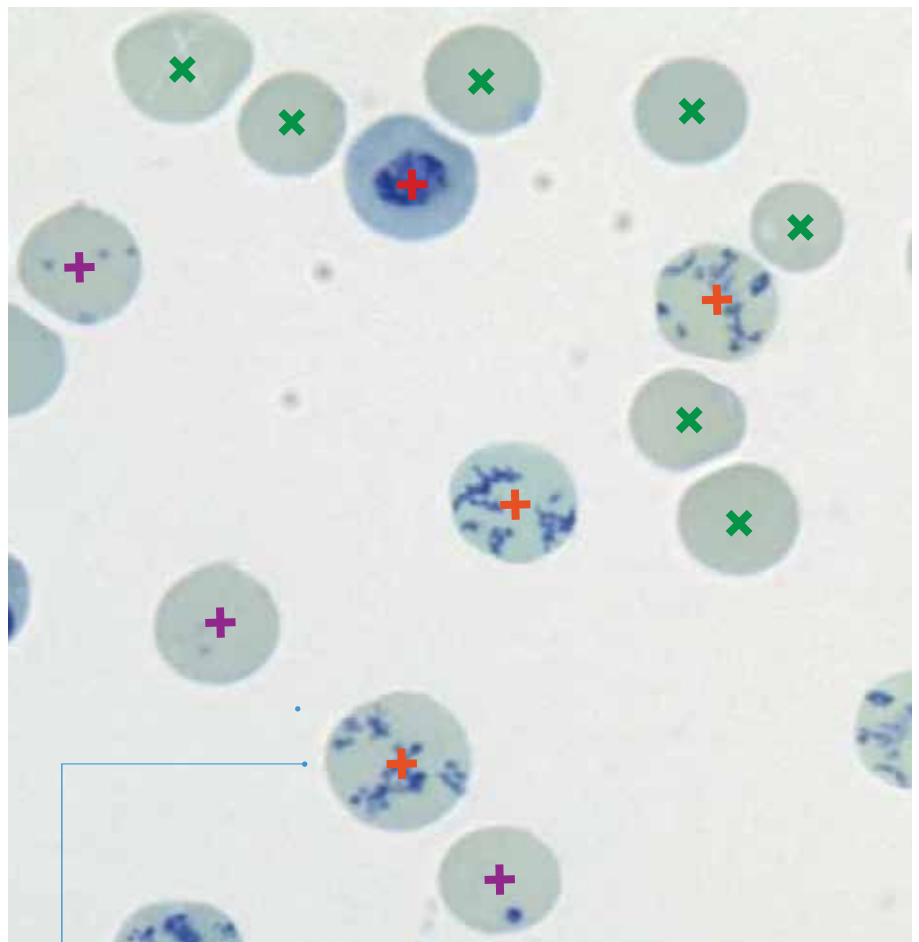
They are a transitional form between erythrocytes in the bone marrow and mature erythrocytes in the blood flow.

### Importance of study

Correct reticulocyte count is needed to diagnose anemia, clarify its causes and monitor the effectiveness of treatment. Furthermore, reticulocyte study is included in many screening protocols of various conditions and diseases.

1

Automatic capture of 1000 erythrocytes, detection and count of reticulocytes

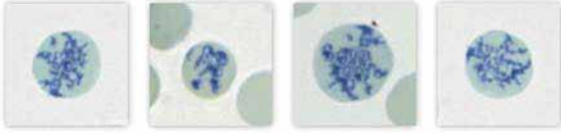


When a reticulocyte is in the field of view, the system automatically identifies and highlights it with a marker.

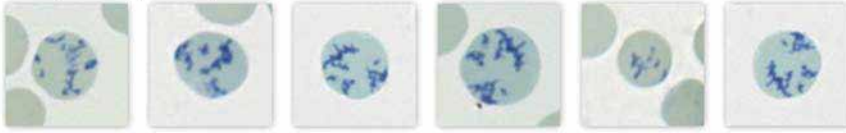
## 2

### Pre-classification of reticulocyte cells and creation of galleries

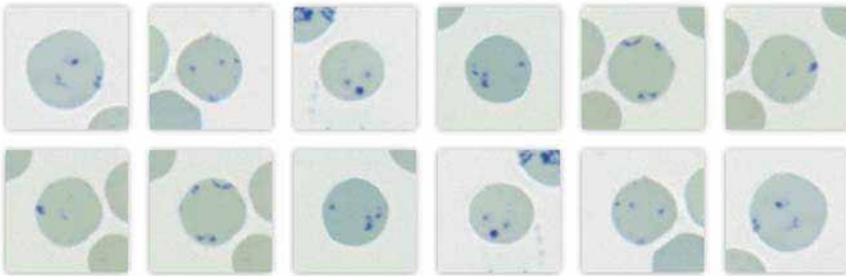
#### ▲ Reticulocyte class II (Elements: 4)



#### ▲ Reticulocyte class III (Elements: 6)



#### ▲ Reticulocyte class IV (Elements: 12)



## 3

### Calculated parameters

#### Reticulocyte count

- RET ‰ (reticulocyte count per 100 erythrocytes)
- RET % (number of reticulocytes per 100 erythrocytes)
- RET # (number of reticulocytes in 1 liter of blood)

#### Reticulocyte differential count

- RET R0 %, #, abs
- RET R1 %, #, abs
- RET R2 %, #, abs
- RET R3 %, #, abs
- RET R4 %, #, abs

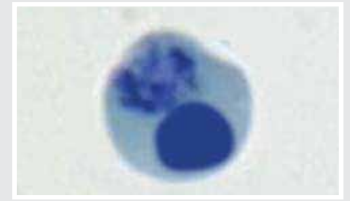
#### Distribution of reticulocytes by maturation

- H RET %, #, abs
- M RET %, #, abs
- L RET %, #, abs

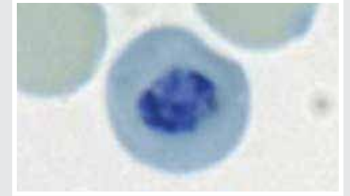
#### Reticulocyte indices

- RI (reticulocyte index)
- RPI (reticulocyte production index)

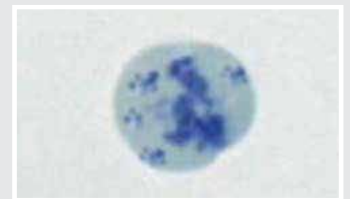
### Classes of reticulocytes



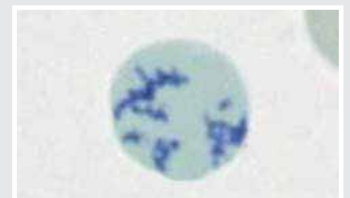
Nucleated reticulocyte class 0  
R0 / H RET



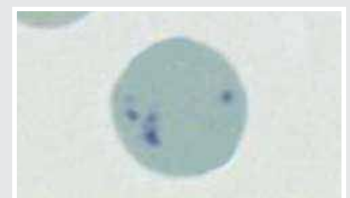
Reticulocyte class I  
R1 / H RET



Reticulocyte class II  
R2 / M RET



Reticulocyte class III  
R3 / L RET



Reticulocyte class IV  
R4 / L RET

\* Product images are shown for reference only and final product may differ



**VISION**

[www.wm-vision.com](http://www.wm-vision.com)

Franz-Siegel-Gasse 1  
2380 Perchtoldsdorf, Austria  
tel.: +43 (1) 804 81 84  
fax: +43 (1) 804 81 85  
[vienna@westmedica.com](mailto:vienna@westmedica.com)



[www.westmedica.com](http://www.westmedica.com)

