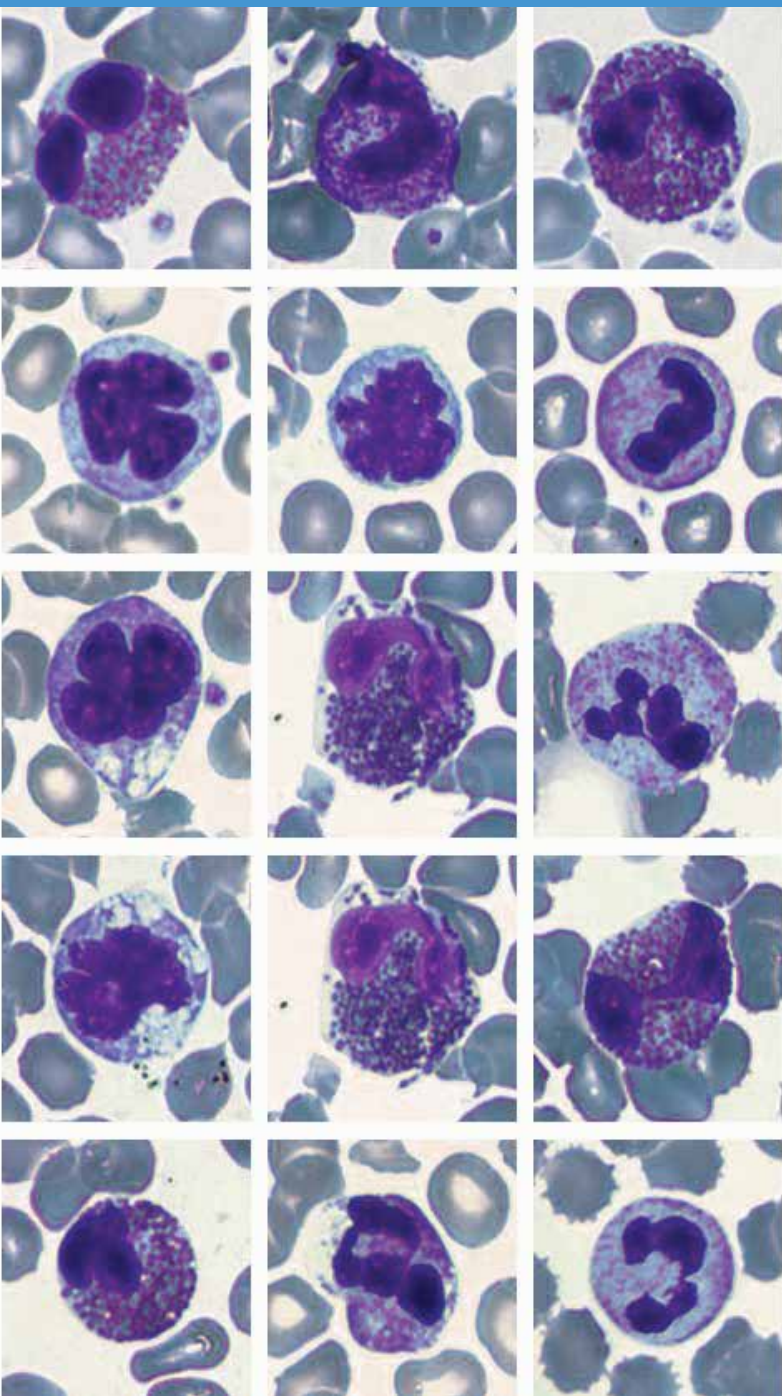


# Vision Hema<sup>®</sup> Assist

## Blood cell image analysis



# Professional solution for hematology laboratory

Workflow automation and standardization. Improved quality and increased productivity. Time efficiency.

Automatic scanning

Identification and pre-classification of blood cells

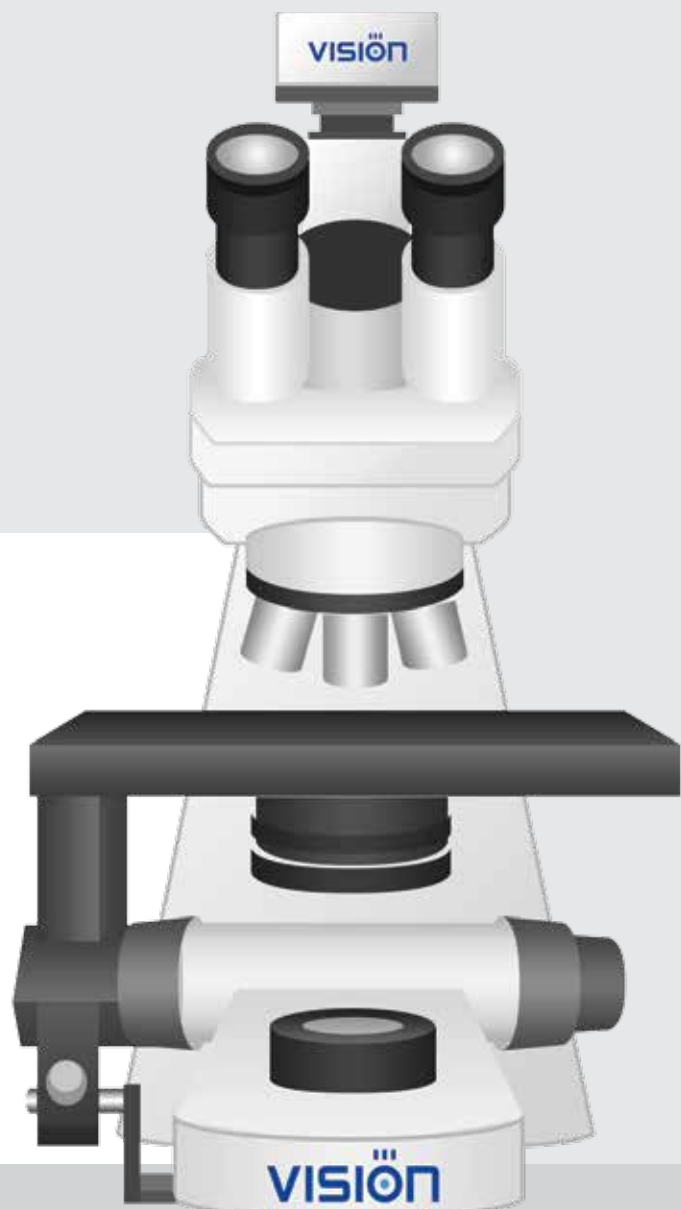
Quick verification of results

Morphology analysis



## “Virtual” sample preparation

A digital sample is indispensable when you have an object that can't be seen entirely in the field of view with the required magnification — it is just not possible to see it completely without creating a “virtual sample”.



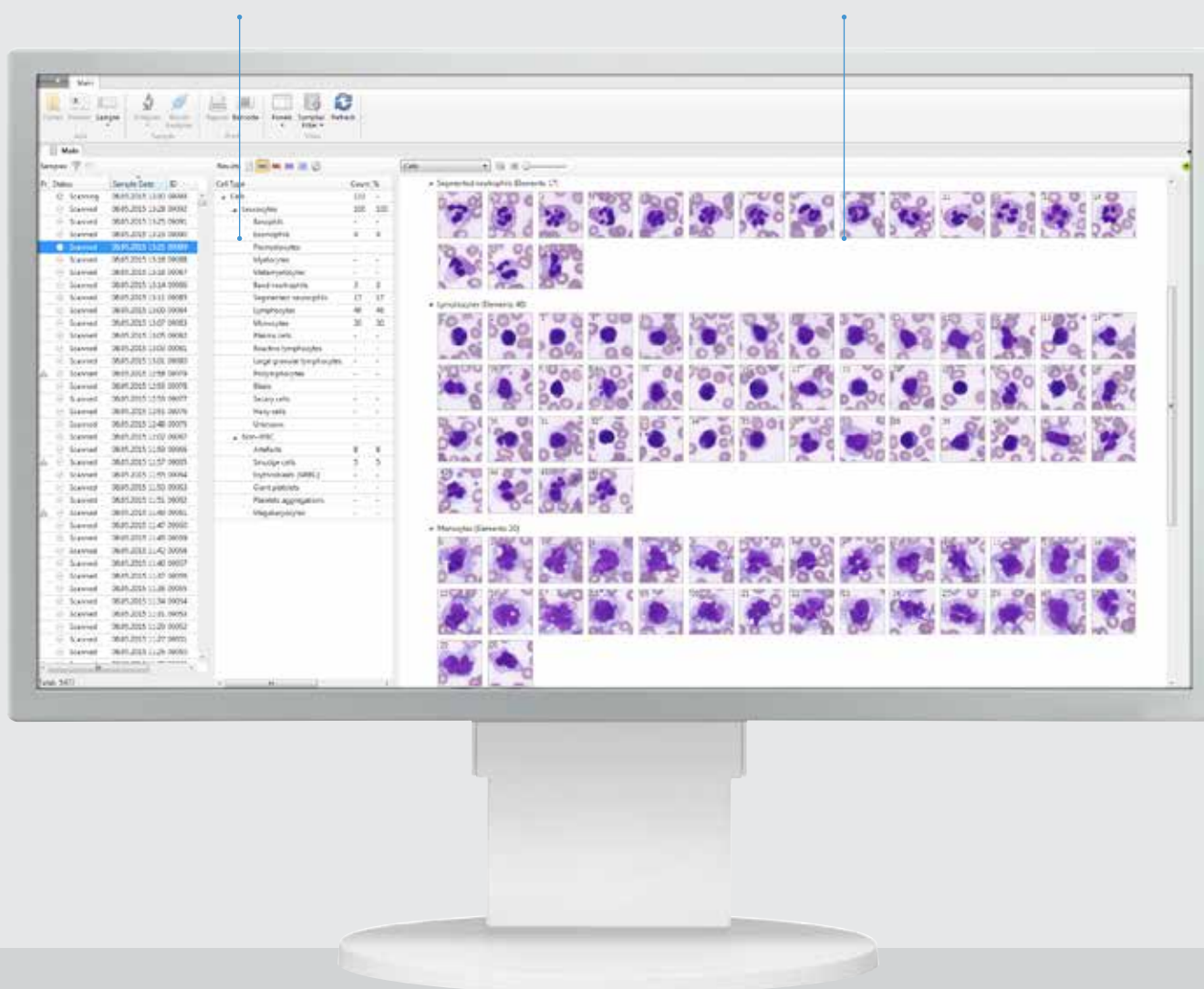
# Reliability and objectivity, confirmed by documentation

## Identification and pre-classification of blood cells

Identified and pre-classified blood cells are placed in a gallery and are organized into groups.

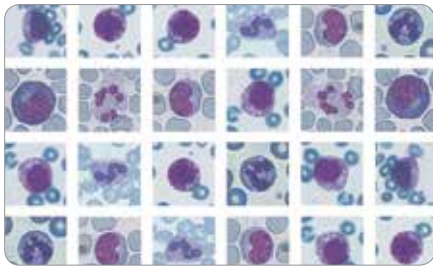
## Quick verification of results

Laboratory personnel performs validation of analysis results, make corrections if necessary and confirms final report.



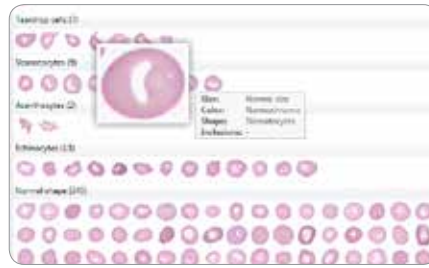


# Optimal solution for laboratories



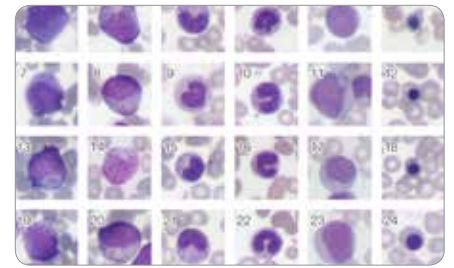
## Scanning, identification and pre-classification

Vision Hema® automatically scans a microscopic sample, collects data for analysis, sorts blood cells and saves the results in the database.



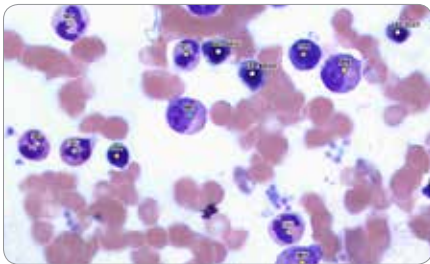
## Validation of WBC, RBC and platelets

The specialist is free from routine monotonous work. Analysis results are displayed in galleries of cells and arranged in groups. All you need to do is to review and verify the results.



## Solution for difficult cases with pathological blood cells

Pre-classification by types of leucocytes and identification of immature and atypical shapes of blood cells including blasts; pre-classification of normoblasts and other non-leucocytic cells.



## Additional features

**Vision Hema® Extended RBC**  
Detailed analysis of erythrocytes.

**Vision Hema® Bone Marrow**  
Analysis of bone marrow cells.

**Vision Hema® RET**  
Identification and pre-classification of reticulocytes.

**Vision Hema® Malaria**  
Analysis of Malaria.

**Vision Hema® Body Fluids**  
Cell morphology in human body fluids.



## Solutions and network capabilities

**Vision Hema® Integro**  
Integration with a hematology analyzer.

**Vision Hema® Manager**  
Standardization of blood smear analysis procedure.

**Vision Hema® Remote**  
Remote access to analysis results.

**Vision Hema® Network**  
Unified information environment.



## Competence evaluation and training of specialists

**Vision Hema® Expertise**  
Online testing.  
Quality control and training of specialists.

\* Product images are shown for reference only and final product may differ

