

Vision Cyto[®]

Cytologist's workplace



Systems for cytological analysis

Automated

Vision Cyto® Assist



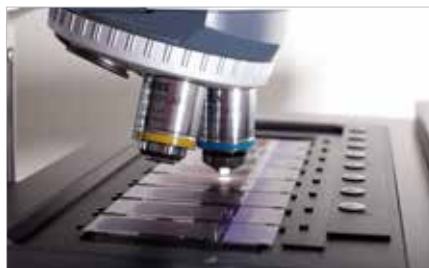
Successive slide loading
by operator

Vision Cyto® 4Pro



Multiple slide loading by operator

Vision Cyto® 8Pro



Slide tray loading

Vision Cyto® Ultimate



Loading of up to 200 slides
simultaneously

Semi-automated

Vision Cyto® Basic



Manual cell image capture

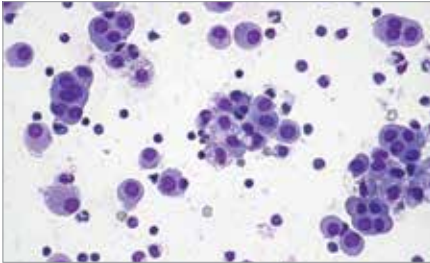
Vision Cyto® Basic AF



Autofocus and manual cell image
capture

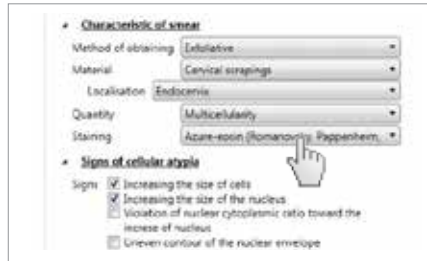
9 main characteristics

1



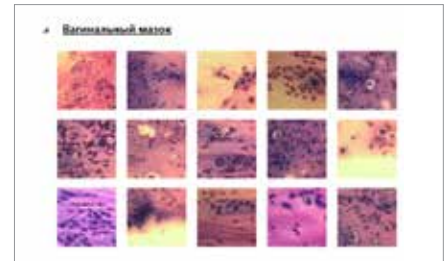
Scanning of the samples

2



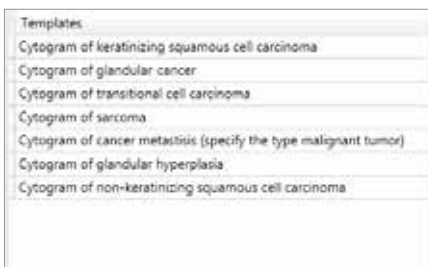
A pre-set algorithm for cytology analysis

3



Hints from the atlas

4



Diagnosis templates

5



Database for archive management

6



Report generation

7



Remote access and network capabilities

8

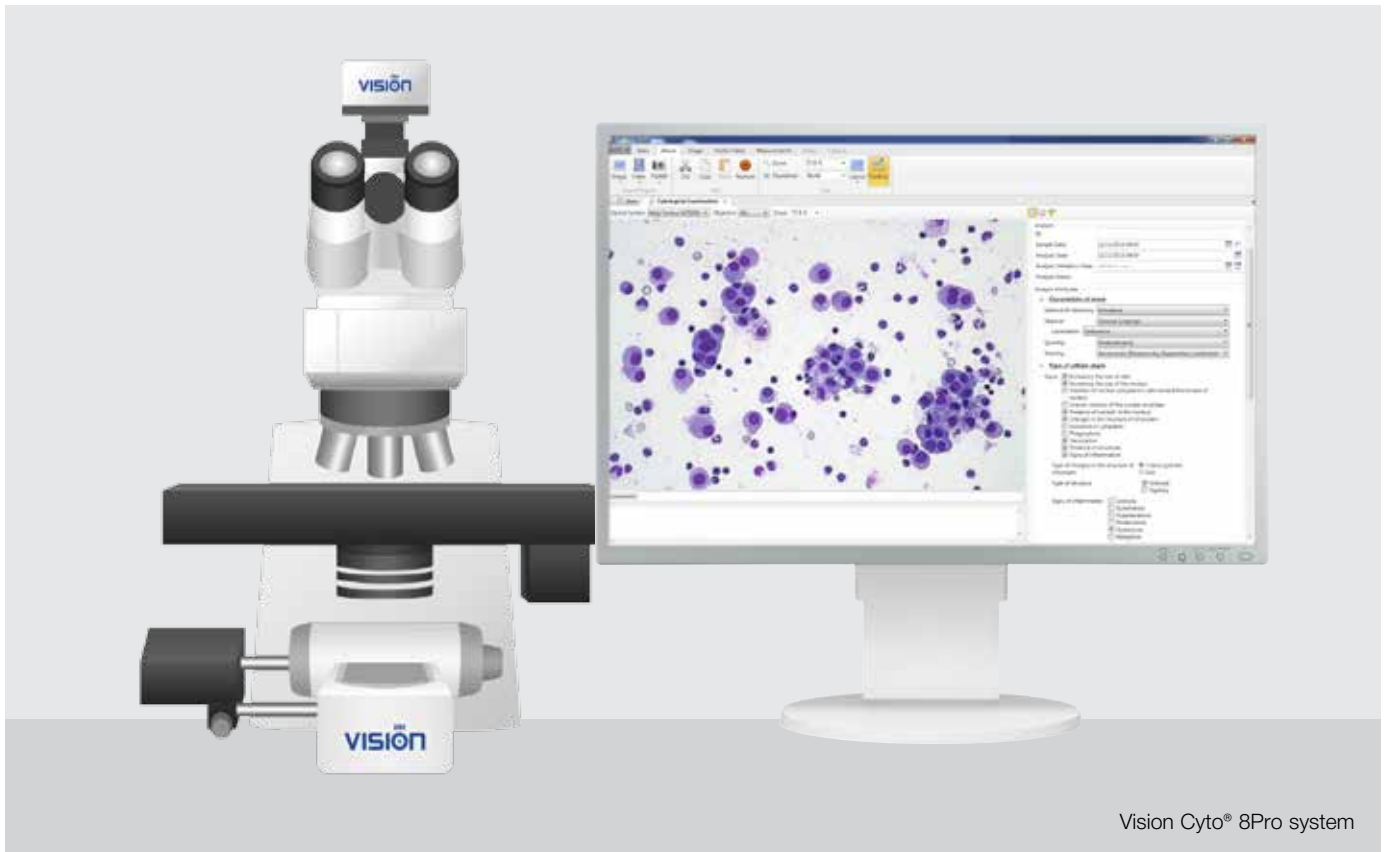


Education and professional development

9

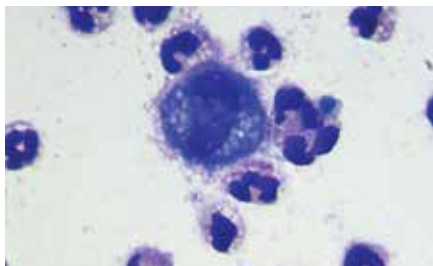


Bi-directional communication with LIS



Vision Cyto® 8Pro system

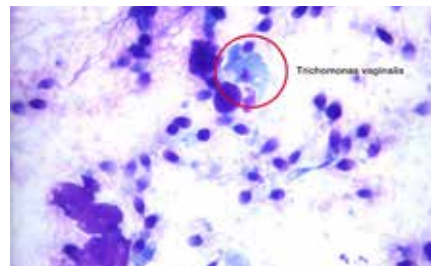
Vision Cyto® Body Fluids



Cell morphology in human body fluids

Count and study of cells in human body fluids. Preview of the whole sample with 100x magnification as well as a detailed study with 1000x magnification. Pre-set reference guides for analysis of bone marrow, effusion, cerebrospinal fluid and others.

Vision Sperm Sediment®



Sperm sediment analysis

Cytologic analysis of sperm sediment for examination of latent trichomoniasis, fungal, HPV infections, disbiosis and etc. The module contains specialized algorithm for analysis based on cell's morphological markers and automatic calculation of CSS index.

Vision Cyto® Remote



Distant access to analysis results

Additional workplaces to improve efficiency. Connecting several working places to a remote server allows the organization an information network for the medical institution. Improved cooperation and centralization of expertise.

* Product images are shown for reference only and final product may differ

