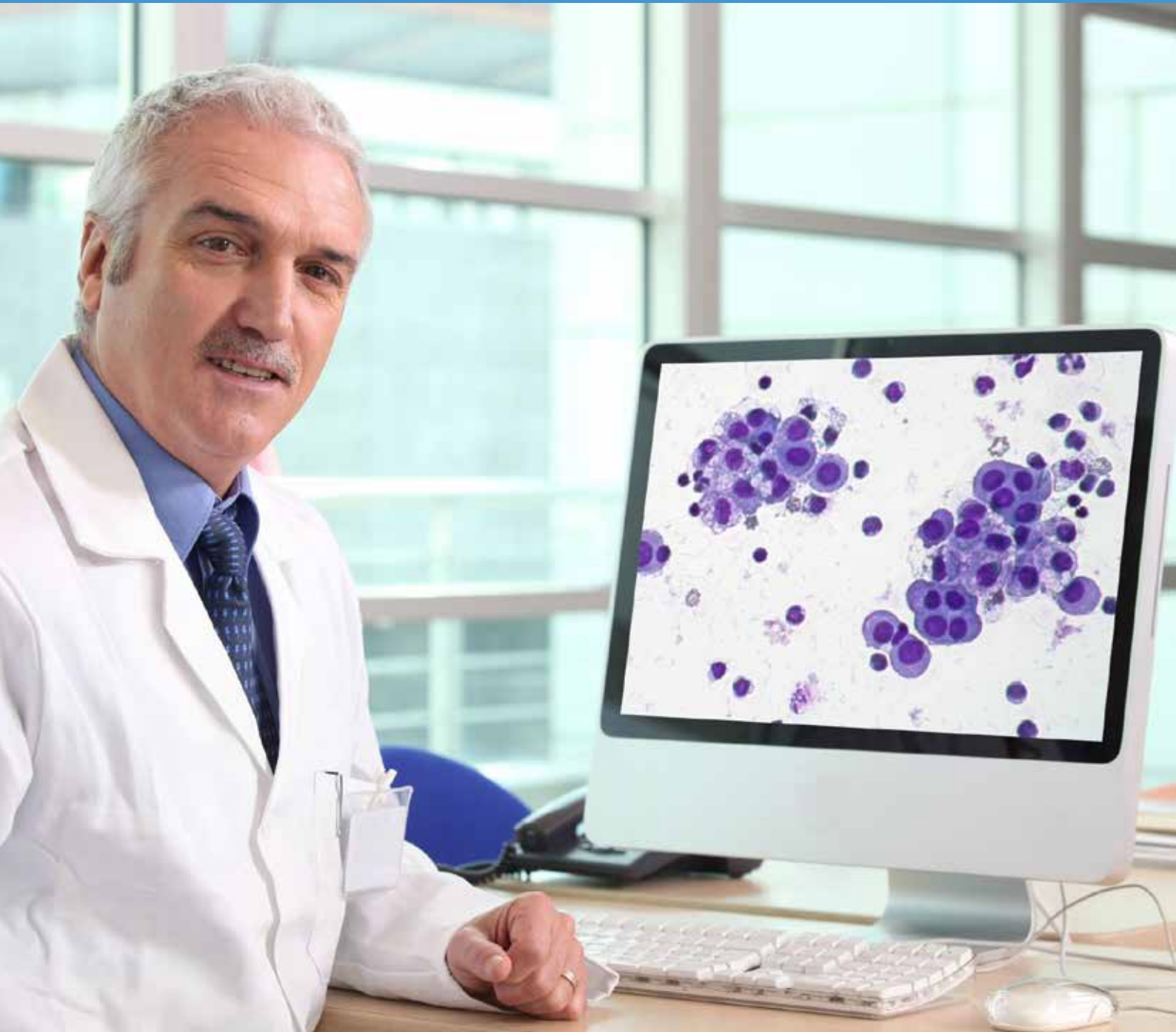


Vision Cyto[®] Basic

Cytologist's workplace



Digital cytology

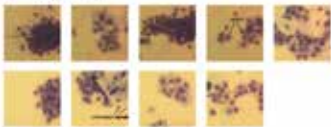
Organization and interpretation of cytological examinations

Hints from the atlas

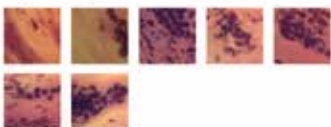
Develop your professional expertise by creating and maintaining an atlas. Add images with comments for later reference.

• Non-keratinizing squamous cell carcinoma

• Pharyngeal swab



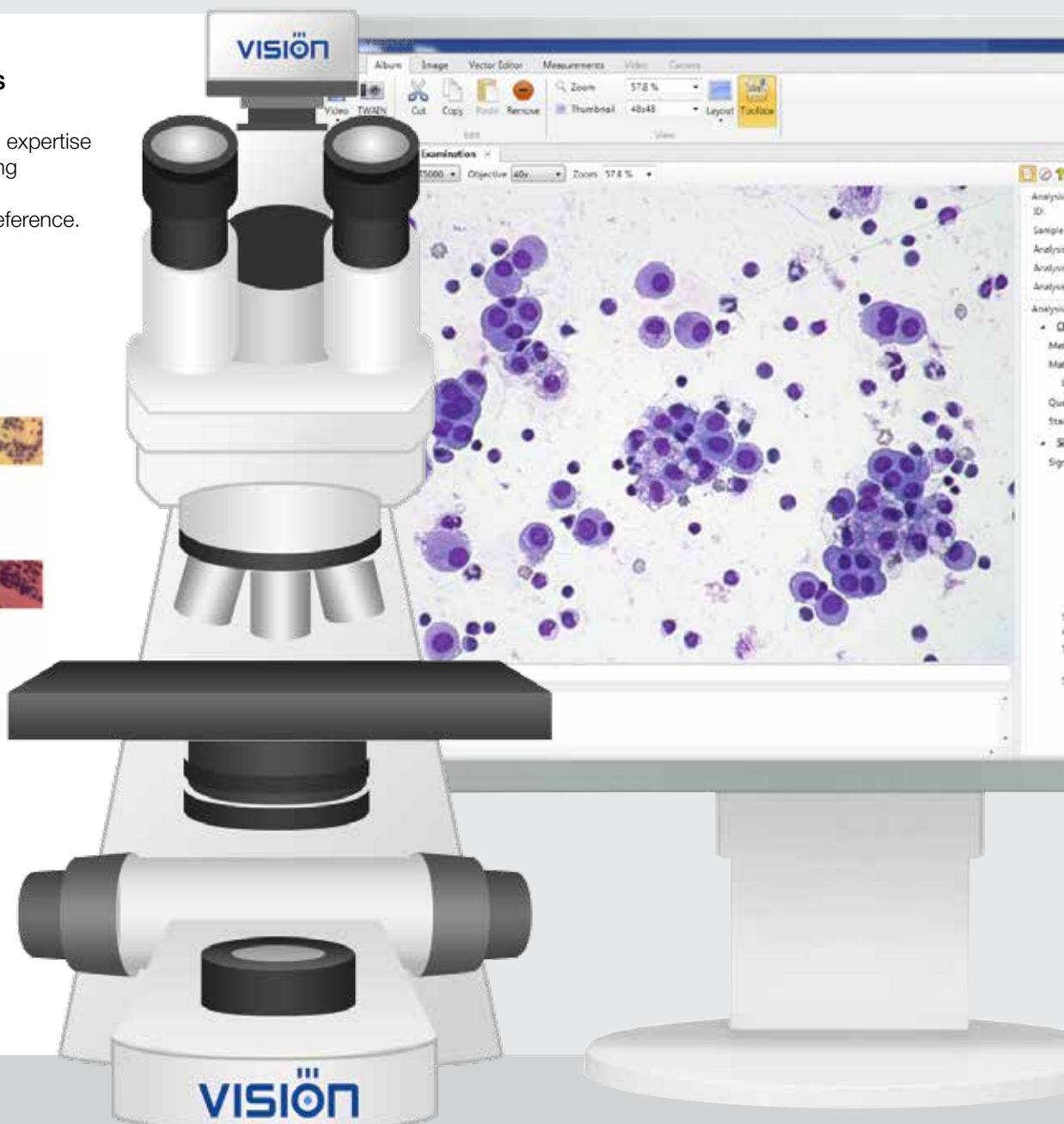
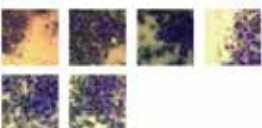
• Vaginal smear



• Low differentiated carcinoma of lung



• Papillary thyroid carcinoma



Sample microscopy

Find a required object on the cytology sample in video mode, and capture its digital image.

Simple interface

The toolbar is designed according to analysis' algorithm and ensures compliance with all procedure stages, thus providing reliable results. The toolbar has minimal size to retain space for working with images.



Combination of innovative technology and classical microscopy extends working possibilities

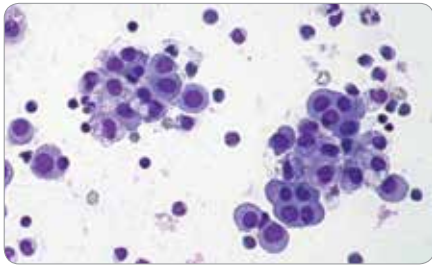
A pre-set algorithm for cytology analysis

An irreplaceable assistant offers a standardized algorithm for the cytological examination. Raise the quality of cytological examinations to a new level.

Analysis Attributes

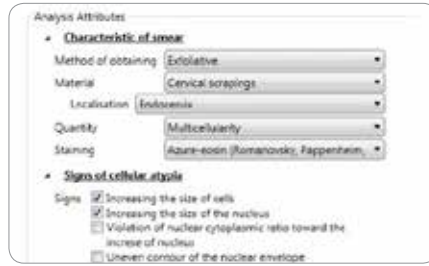
- Characteristic of smear**
 - Method of obtaining: Exfoliative
 - Material: Cervical scrapings
 - Localisation: Endocervix
 - Quantity: Multicellularity
 - Staining: Azure-eosin (Romanovsky, Pappenheim)
- Signs of cellular atypia**
 - Signs
 - Increasing the size of cells
 - Increasing the size of the nucleus
 - Violation of nuclear cytoplasmic ratio toward the increase of nucleus
 - Uneven contour of the nuclear envelope
 - Presence of nucleoli in the nucleus
 - Changes in the structure of chromatin
 - Inclusions in cytoplasm
 - Phagocytosis
 - Vacuolation
 - Presence of structures
 - Signs of inflammation
 - Type of changes in the structure of chromatin
 - Coarse-grained
 - Soft
 - Type of structure
 - Granular
 - Papillary
 - Signs of inflammation
 - Cytolysis
 - Dyskeratosis
 - Hyperkeratosis
 - Parakeratosis
 - Dyskaryosis
 - Metaplasia
 - Cellular elements of inflammation
 - Elements
 - Leucocytes
 - Macrophages
 - Reticular cells
 - Lymphoid elements
- Proliferative activity**
 - Attributes
 - Presence of mitosis
 - Presence of multinucleated cells
 - Cellular polymorphism
- Characteristic of cells**
 - Differentiated features: Glandular
- Characteristic of nucleus**
 - Signs of dystrophy and necrobiosis
 - Karyorhexis
 - Karyopyknosis
 - Karyolysis
- Characteristic of nucleolus**
 - Quantity: 1-2
- Characteristic of background**
 - Presence of cell debris: No
- Cytological album of diagnoses**
 - Result Interpretation: Glandular hyperplasia [Templates]
 - Notes: Case follow-up is required [Templates]
 - Diagnoses: [Diagnosis] [Diagnosed] [Removed]
 - Established Diagnoses: [New]

Main characteristics



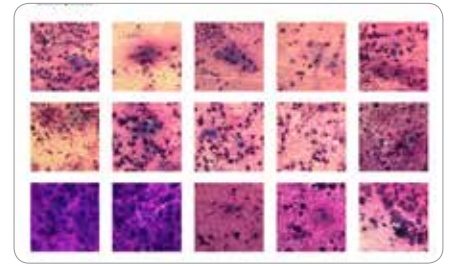
Convenient organization and professional tools

Convenient work with digital samples. Find a required object on the cytology sample in video mode, and capture its perfectly crisp digital image.



A pre-set algorithm for cytology analysis

An irreplaceable assistant offers a standardized algorithm for the cytological examination. Raise the quality of cytological examinations to a new level.



Hints from the atlas

Develop your professional expertise by creating and maintaining an atlas. Add images with comments for later reference.



Remote access and network capabilities

Vision Cyto® Remote

Distant access to analysis results. Remote consultations and expert opinions. Remote supervision and monitoring. Remote validation of results.

Vision Cyto® Network

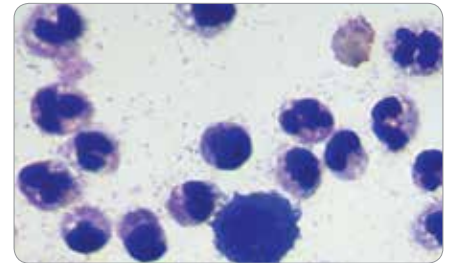
A single information environment.



Laboratory Information System

Vision Cyto® LIS

Possibility of bi-directional communication with LIS. Receiving tasks from LIS, automatic transfer of analysis parameters to LIS.



Additional modules

Vision Cyto® Body Fluids

Count and study of cells in human body fluids.

Vision Sperm Sediment®

Cytologic analysis of sperm sediment for analysis of latent trichomoniasis, fungal, HPV infections, disbiosis and etc.

* Product images are shown for reference only and final product may differ

