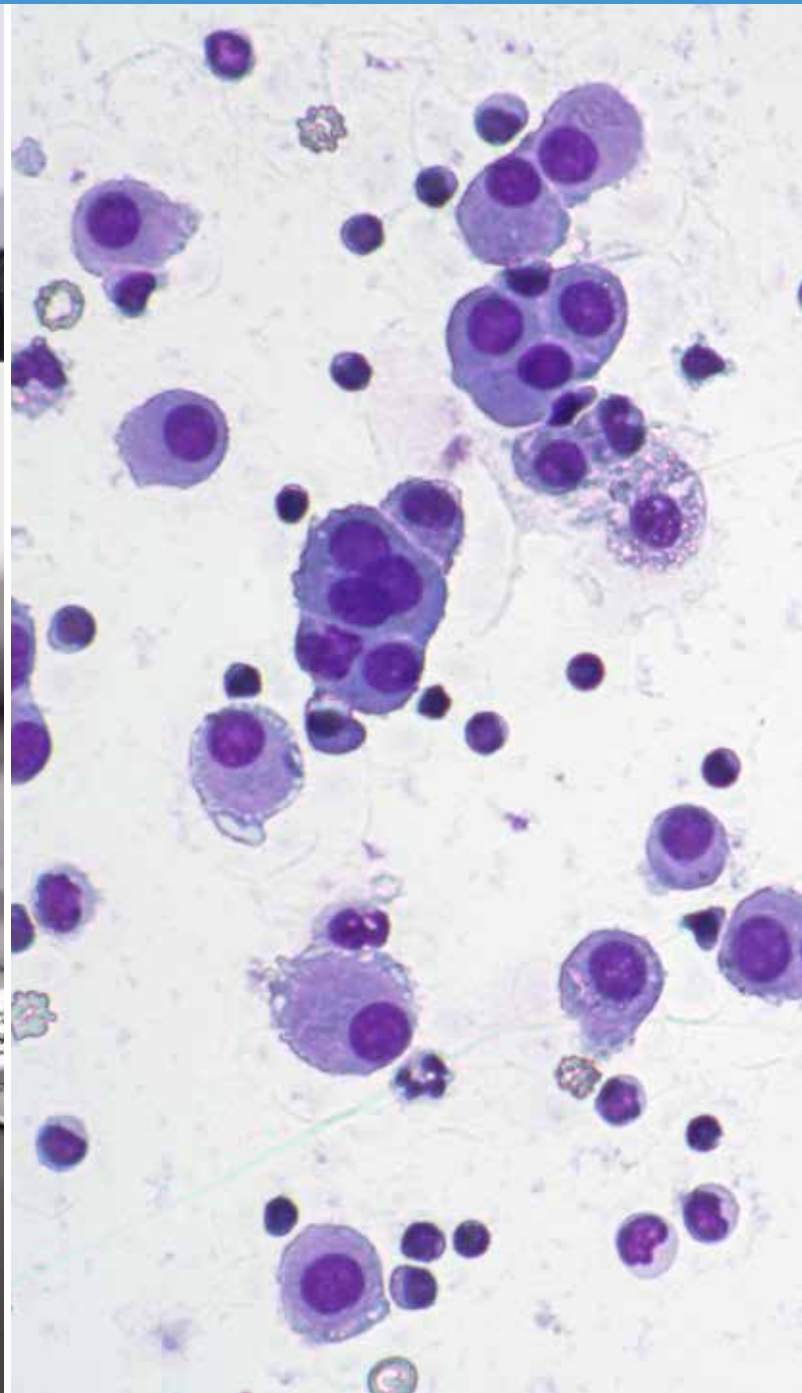


Vision Cyto[®] 8Pro

Cytologist's workplace



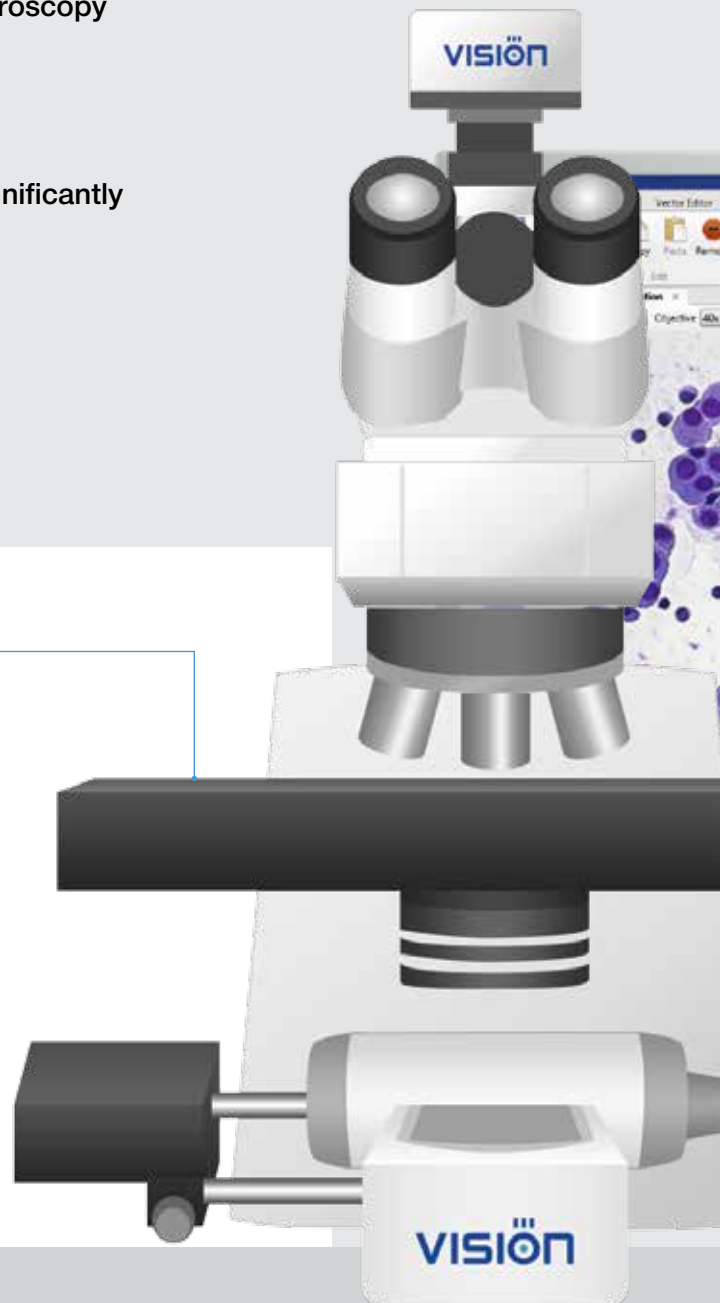
Efficient and professional solution for cytology laboratory

Automatic scanning of the sample. Creation of sample gallery. Algorithm for cytology analysis.

Combination of innovative technology and classical microscopy extends working possibilities

Reduction in routine workload on qualified personnel significantly facilitates the work of the entire laboratory

Slide tray loading

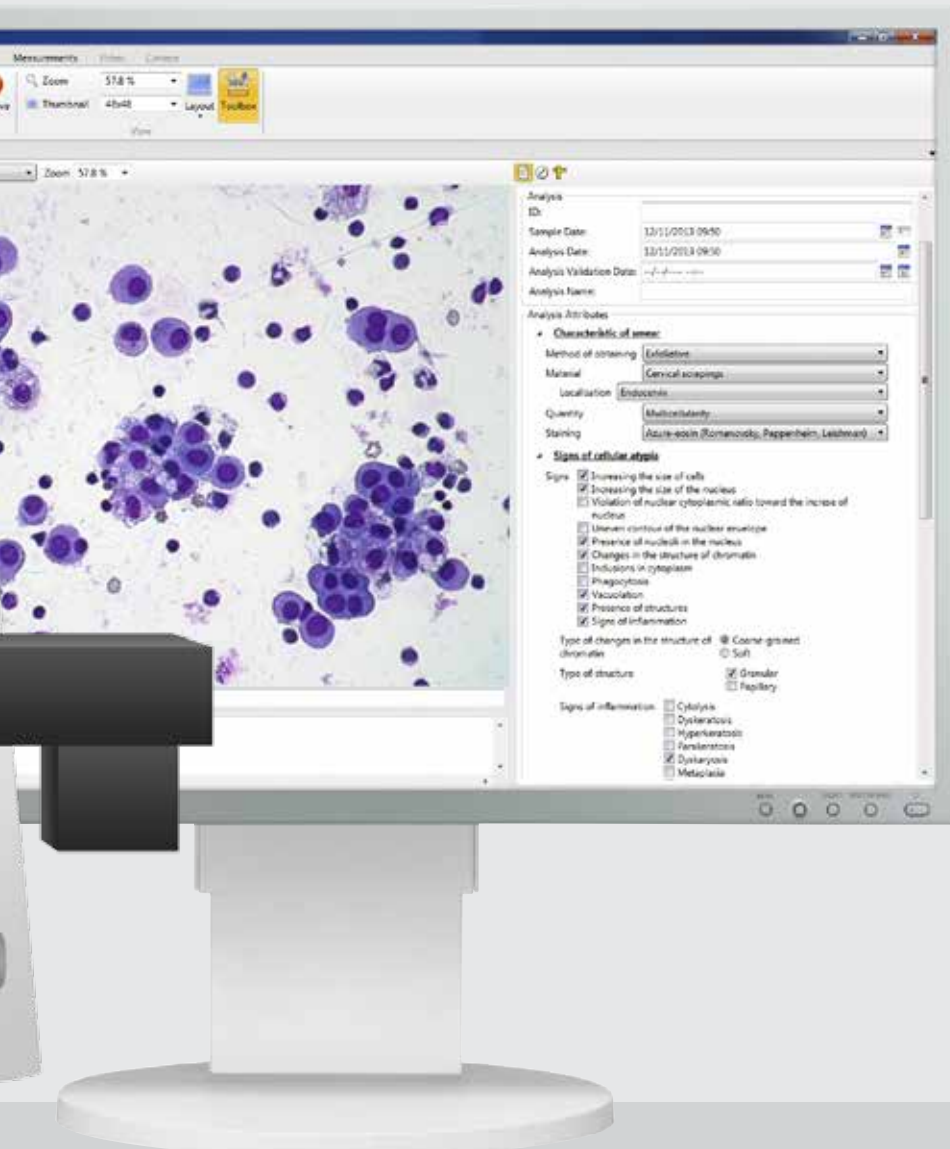


A pre-set algorithm for cytology analysis

An irreplaceable assistant offers a standardized algorithm for the cytological examination. Raise the quality of cytological examinations to a new level.

Sample Attributes

- Characteristic of smear**
 - Method of obtaining: Exfoliative
 - Material: Cervical scrapings
 - Localisation: Endocervix
 - Quantity: Multicellularity
 - Staining: Azure-eosin (Romanovsky, Pappenhei)
- Signs of cellular atypia**
 - Signs:
 - Increased size of cells
 - Increased size of the nucleus
 - Violation of nuclear cytoplasmic ratio toward the

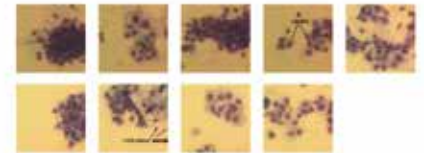


Hints from the atlas

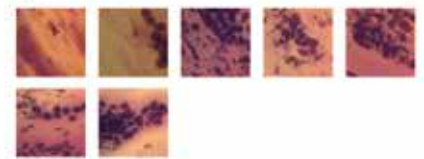
Develop your professional expertise by creating and maintaining an atlas. Add images with comments for later reference.

Non-keratinizing squamous cell carcinoma

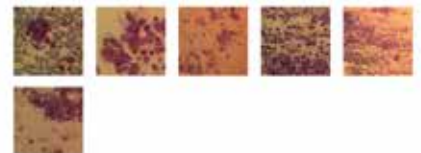
Pharyngeal swab



Vaginal smear



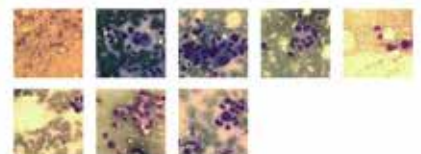
Low differentiated carcinoma of lung



Papillary thyroid carcinoma



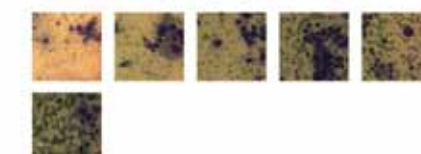
Lobular carcinoma of breast



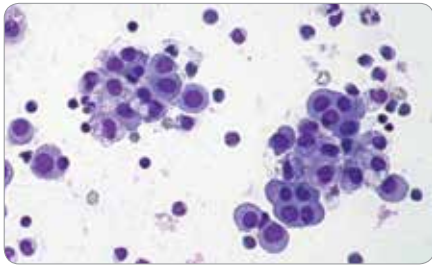
Follicular carcinoma



Follicular blastema, probably thyroid carcinoma

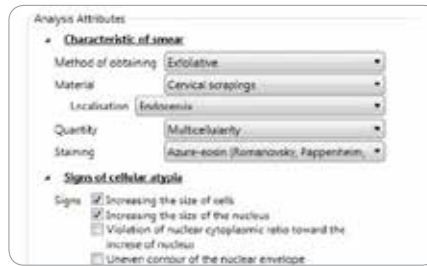


Main characteristics



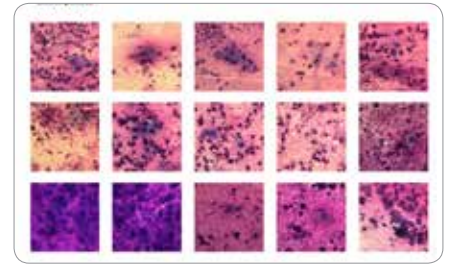
Convenient organization and professional tools

Convenient work with digital samples. Find a required object on the cytology sample in video mode, and capture its perfectly crisp digital image.



A pre-set algorithm for cytology analysis

An irreplaceable assistant offers a standardized algorithm for the cytological examination. Raise the quality of cytological examinations to a new level.



Hints from the atlas

Develop your professional expertise by creating and maintaining an atlas. Add images with comments for later reference.



Remote access and network capabilities

Vision Cyto® Remote

Distant access to analysis results. Remote consultations and expert opinions. Remote supervision and monitoring. Remote validation of results.

Vision Cyto® Network

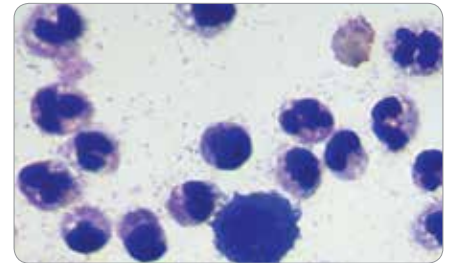
A single information environment.



Laboratory Information System

Vision Cyto® LIS

Possibility of bi-directional communication with LIS. Receiving tasks from LIS, automatic transfer of analysis parameters to LIS.



Additional modules

Vision Cyto® Body Fluids

Count and study of cells in human body fluids.

Vision Sperm Sediment®

Cytologic analysis of sperm sediment for analysis of latent trichomoniasis, fungal, HPV infections, disbiosis and etc.

* Product images are shown for reference only and final product may differ

