

# Vision Microscopy

Microscopes for digital microscopy



# New standards in the daily work

## Applications



medicine



biology



microbiology



biology



veterinary



education



forensics



scientific research



remote counseling



specialist training



## Microscopes for digital microscopy

|                 |                                   |
|-----------------|-----------------------------------|
| <b>MX300</b>    | Biological microscope             |
| <b>MT4300</b>   | Biological microscope             |
| <b>MT5300</b>   | Biological microscope             |
| <b>MT5300 M</b> | Motorized biological microscope   |
| <b>MT300F</b>   | Fluorescence microscope           |
| <b>MT6300</b>   | Fluorescence microscope           |
| <b>MT6300 M</b> | Motorized fluorescence microscope |
| <b>MX1150</b>   | Stereomicroscope                  |
| <b>EMZ</b>      | Stereomicroscope                  |
| <b>RZ</b>       | Stereomicroscope                  |
| <b>RZ M</b>     | Motorized stereomicroscope        |

# Main benefits



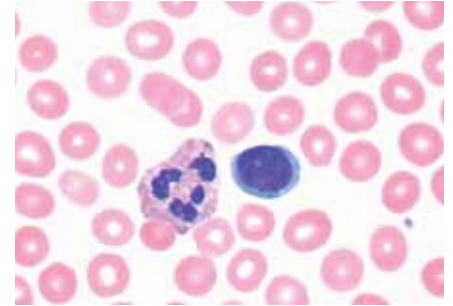
## Digital microscopy

Digital microscopy (digital pathology) is a digital environment for managing and analyzing microscopy data, which is obtained using a microscope, a camera, software and a computer.

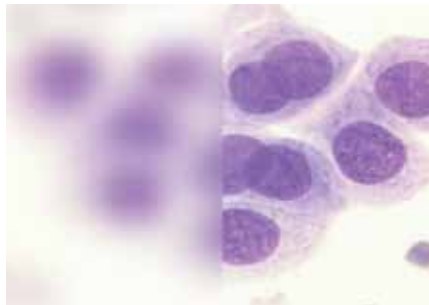
Digital microscopy allows you to attain qualitative and quantitative results, which are either impossible to receive by other means or cost and time consuming.



The highest standard of quality from design to delivery



“Infinite” optical system provides a clear bright image



Motorized focus for automatic sharpness adjustment



Easy to clean and change specimens. Maximum protection



Ergonomic revolving nosepieces for various objectives



Motorized stage with automated focus and control unit

# Biological microscopes



## MX300 — biological microscope

- Convenient trinocular viewing head
- Widefield eyepieces 10x/18 mm
- Ergonomic revolving nosepiece for 5 objectives to change magnification
- New improved Plan achromat ICO Infinite objectives
- Double layer mechanical specimen stage, right handed, 135x140 mm
- Coaxial coarse and fine focus controls
- Height adjustable Abbe condensor, nA 1.25, with integrated iris diaphragm and filter tray
- Koehler illumination with lens, field iris diaphragm and centering mechanism
- Built-in power supply, 220 V, 6 V, 20 W, adjustable
- New improved design, optical system with anti-fungus treatment
- Working methods: brightfield, darkfield, phase contrast, and polarization



## MT4300 — biological microscope

- Convenient Siedentopf type trinocular viewing head
- Compact base saving work surface space
- ICOS (Infinity Corrected Optical System) with advanced optics
- Ceramic coated stage with a low-set ergonomic control knob
- Specimen holder for two slides
- Low positioned ergonomic coaxial focus control
- Ergonomic revolving nosepiece for 5 objectives to change magnification
- Phase contrast, brightfield and darkfield observation modes
- Built-in power supply with automatic voltage detection
- Condensers: Abbe or universal Zernike phase condenser
- Wide range of filters and accessories
- Working methods: brightfield, darkfield, phase contrast, and polarization

**MT4300H:** Microscope with 6 V, 30 W halogen transmitted light illuminator

**MT4300L:** Microscope with 5 W high-brightness LED illuminator



## MT5300 — biological microscope

- Convenient Siedentopf type trinocular viewing head
- SWH 10x widefield high eyepoint eyepiece, F.N. 22 (standard)
- Ergonomic revolving nosepiece for 5 objectives to change magnification
- New improved U Plan achromat ICO Infinitive objectives
- Ceramic coated stage with a low-set ergonomic control knob
- Specimen holder for two slides
- Built-in power supply with automatic voltage detection
- Condensers: Abbe or universal Zernike phase condenser
- New improved design, smooth operation and adjustable iris diaphragm
- Working methods: brightfield, darkfield, phase contrast, and polarization

**MT5300H:** Microscope with 6 V, 30 W halogen transmitted light illuminator

**MT5300L:** Microscope with 5 W high-brightness LED illuminator



## MT5300 M — motorized biological microscope

- Convenient Siedentopf type trinocular viewing head
- Motorized stage for biological microscope, 2 or 3 levels, 75x30 mm
- Automated focus control (Z-movement)
- Mechanical stage and focus control unit
- ICOS™ (Infinity Corrected Optical System) with advanced optics
- SWH 10x widefield high eyepoint eyepiece, F.N. 22 (standard)
- Ergonomic revolving nosepiece for 5 objectives to change magnification
- New improved U Plan achromat ICO Infinitive objectives
- Built-in power supply with automatic voltage detection
- Condensers: Abbe or universal Zernike phase condenser
- Wide range of filters and accessories
- Photo and video documentation
- Working methods: brightfield, darkfield, phase contrast, and polarization

**MT5300H M:** Microscope with 6 V, 30 W halogen transmitted light illuminator

**MT5300L M:** Microscope with 5 W high-brightness LED illuminator

# Fluorescence microscopes



## MX300 F — fluorescence microscope

- Convenient trinocular viewing head
- Widefield eyepieces 10x/18 mm
- New improved Plan achromat ICO Infinite objectives
- Fluorescence attachment
- The light-filter system of main body: 2 exciting filters, double direction dichroic mirror, 2 cut-off filters. Filter blocks: V (blue), G (green), O (transmitted light)
- 100 W mercury lamp
- Ergonomic revolving nosepiece for 5 objectives to change magnification
- Double layer mechanical specimen stage, right handed, 135x140 mm
- Coaxial coarse and fine focus controls
- Height adjustable Abbe condensor, nA 1.25, with integrated iris diaphragm and filter tray
- Koehler illumination with lens, field iris diaphragm and centering mechanism
- Built-in power supply, 220 V, 6 V, 20 W, adjustable
- Lamphouse for mercury lamp
- New improved design, optical system with anti-fungus treatment
- Working methods: fluorescence, brightfield, darkfield, phase contrast, and polarization



## MT6300 — fluorescence microscope

- Convenient Siedentopf type trinocular viewing head
- SWH 10x widefield high eyepoint eyepiece, F.N. 22 (standard)
- New improved S Plan achromat ICO Infinite objectives for fluorescence
- Fluorescence module: fluorescence reflected light illuminator with a mount for six fluorescent filter sets
- Standard blue, green and neutral density filters
- Lamphouse for 100 W mercury lamp
- Ergonomic revolving nosepiece for 5 objectives to change magnification
- Ceramic coated stage with a low-set ergonomic control knob
- Specimen holder for two slides
- New power supply for mercury lamp with automatic ignition and power stabilization system, lamp life counter and silent mode
- Condensers: Abbe or universal Zernike phase condenser
- Working methods: fluorescence, brightfield, darkfield, phase contrast, and polarization

**MT6300H:** Microscope with 6 V, 30 W halogen transmitted light illuminator

**MT6300L:** Microscope with 5 W high-brightness LED illuminator



## MT6300 M — motorized fluorescence microscope

- Convenient Siedentopf type trinocular viewing head
- Motorized stage for biological microscope, 2 or 3 levels, 75x30 mm
- Automated focus control (Z-movement)
- Mechanical stage and focus control unit
- ICOS™ (Infinity Corrected Optical System) with advanced optics
- SWH 10x widefield high eyepoint eyepiece, F.N. 22 (standard)
- Ergonomic revolving nosepiece for 5 objectives to change magnification
- Fluorescence module: fluorescence reflected light illuminator with a mount for six fluorescent filter sets
- Standard blue, green and neutral density filters
- Lamphouse for 100 W mercury lamp
- Condensers: Abbe or universal Zernike phase condenser
- Photo and video documentation
- Working methods: fluorescence, brightfield, darkfield, phase contrast, and polarization

**MT6300H M:** Microscope with 6 V, 30 W halogen transmitted light illuminator

**MT6300L M:** Microscope with 5 W high-brightness LED illuminator

# Stereomicroscopes



## MX 1150 — stereomicroscope

- Professional ZOOM stereomicroscope
- Trinocular tube for photo/video documentation
- New optics with high resolution and large depth of field
- Zoom range: 8–50x (300x)
- Widefield eyepieces 10x/122 mm
- Illumination system: transmitted light, incident light
- Halogen illumination adjustable: incident light: LED, transmitted light: LED
- Optical system with anti-fungus treatment



## EMZ — stereomicroscope

- Trinocular ZOOM microscope for photo and video documentation
- Precision optics provide a superb high-definition stereoscopic images
- Robust metal housing ensures long life of the microscope
- Zoom range: 0,7–4,5x
- Zoom ratio: 6:5:1
- Focus controls on both sides
- Eyetube with 45° Inclination for convenient work with a microscope
- Extended magnification range: 2,1–270x
- Dual dioptric adjustment: ( $\pm 5$  D) keeps the image focused throughout the zoom range
- Interpupillary distance adjustment: 54–75 mm
- Trinocular head with 360° inclination securable in any position
- Working distance: 93 mm
- Extended working distances: 34–251 mm
- Incident and transmitted LED light stand



## RZ — stereomicroscope

- Abbe optical scheme
- Total magnification (of a set of eyepieces and objectives) from 3.75x to 300x
- ZOOM 1:10 (0,75–7,5x)
- Plan Achromat objectives: 0,5x, 0,75x, 1,0x, 1,5x, 2,0x
- Ultra widefield objectives with diopter adjustment: 10x, 15x, 20x
- Standard binocular head with 45° inclination; ergonomic binocular head with adjustable inclination of 10–50°
- Photo and video documentation
- Working methods: brightfield, darkfield, polarization, reflected and transmitted light microscopy



## RZ M — motorized stereomicroscope

- Motorized stage for biological microscope, 2 or 3 levels, 75x30 mm
- Automated focus control (Z-movement)
- Mechanical stage and focus control unit
- Abbe optical scheme
- Total magnification (of a set of eyepieces and objectives) from 3.75x to 300x
- ZOOM 1:10 (0,75–7,5x)
- Plan Achromat objectives: 0,5x, 0,75x, 1,0x, 1,5x, 2,0x
- Ultra widefield objectives with diopter adjustment: 10x, 15x, 20x
- Standard binocular head with 45° inclination; ergonomic binocular head with adjustable inclination of 10–50°
- Photo and video documentation
- Working methods: brightfield, darkfield, polarization, reflected and transmitted light microscopy

# Ordering information

| Description  | Code       |
|--|------------|
| <b>MX 300</b><br>Biological microscope               | 09.0300.03 |
| <b>MT4300</b><br>Biological microscope               | 30.4301.01 |
| <b>MT5300</b><br>Biological microscope               | 30.5301.01 |
| <b>MT5300 M</b><br>Motorized biological microscope   | 40.5301.01 |
| <b>MX300 F</b><br>Fluorescence microscope            | 09.0301.03 |
| <b>MT6300</b><br>Fluorescence microscope             | 30.6301.01 |
| <b>MT6300 M</b><br>Motorized fluorescence microscope | 40.6301.01 |
| <b>MX 1150</b><br>Stereomicroscope                   | 09.0000.01 |
| <b>EMZ</b><br>Stereomicroscope                       | 31.0001.00 |
| <b>RZ</b><br>Stereomicroscope                        | 30.0000.01 |
| <b>RZ M</b><br>Motorized stereomicroscope            | 41.0000.01 |



**Digital cameras  
for microscopy —  
from economic laboratory  
to professional with extra  
high resolution**





WEST MEDICA  
Franz-Siegel-Gasse 1  
2380 Perchtoldsdorf, Austria  
tel.: +43 (1) 804 81 84  
fax: +43 (1) 804 81 85  
vienna@westmedica.com

[www.vision-at.com](http://www.vision-at.com)

We reserve the right to change specification without notice.

Official distributor