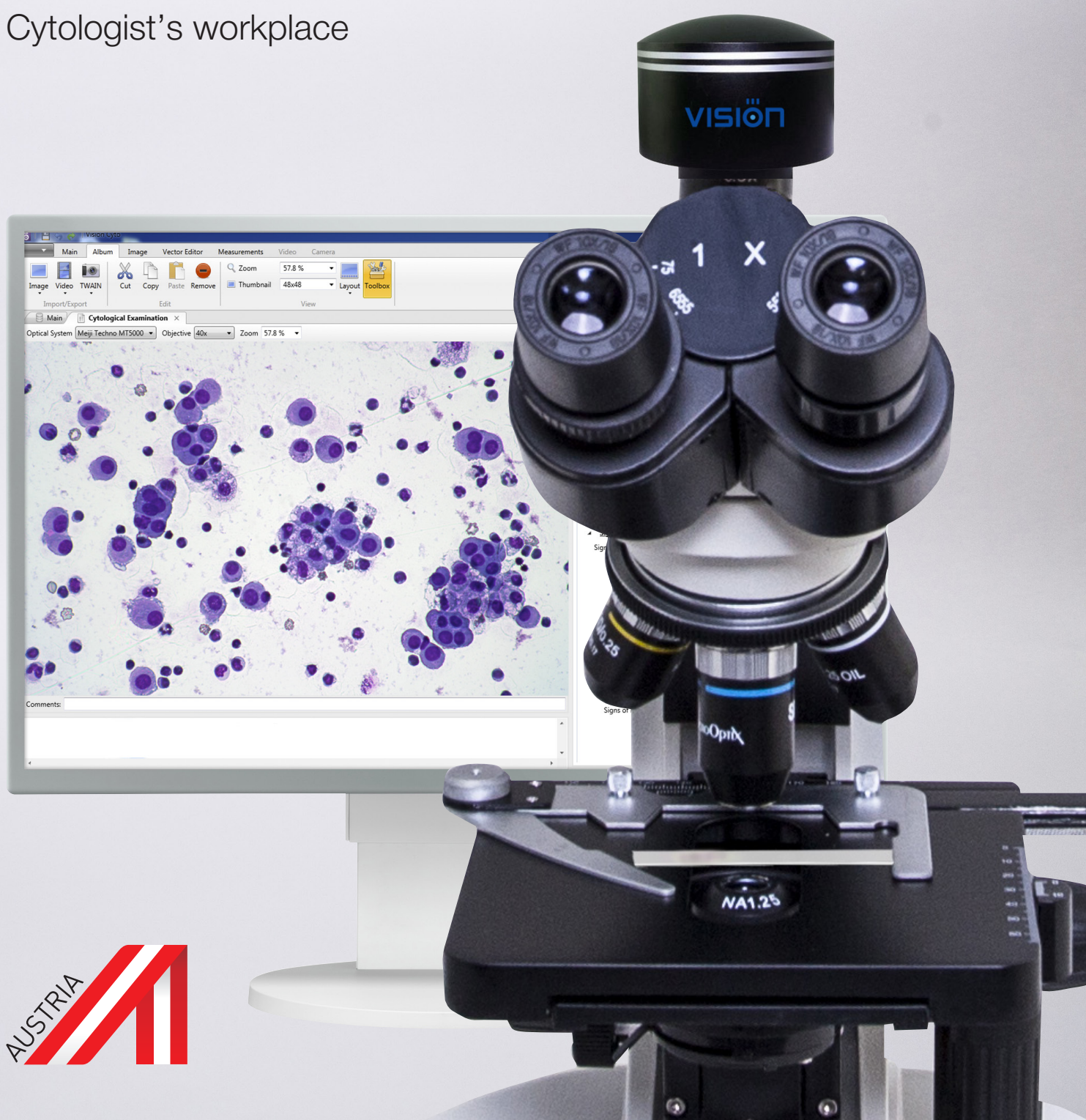


MX Vision Cyto

Cytologist's workplace



MX Vision Cyto

Digital cytology

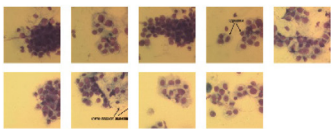
Organization and interpretation of cytological examinations

Hints from the atlas

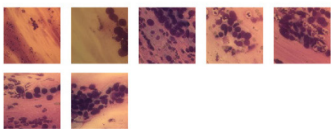
Develop your professional expertise by creating and maintaining an atlas. Add images with comments for later reference.

Non-keratinizing squamous cell carcinoma

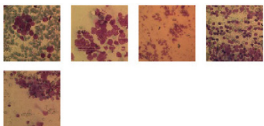
Pharyngeal swab



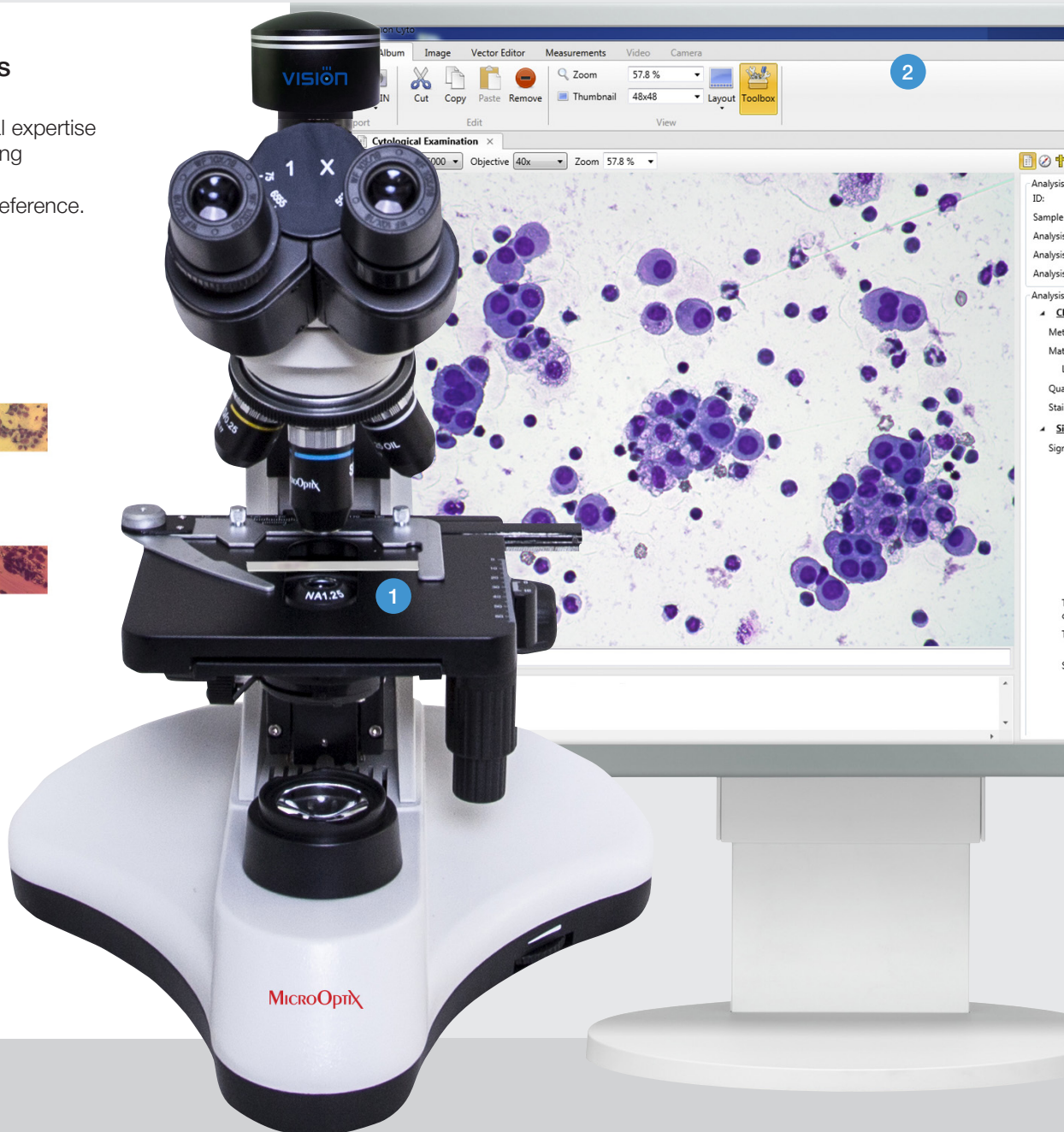
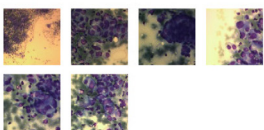
Vaginal smear



Low differentiated carcinoma of lung



Papillary thyroid carcinoma

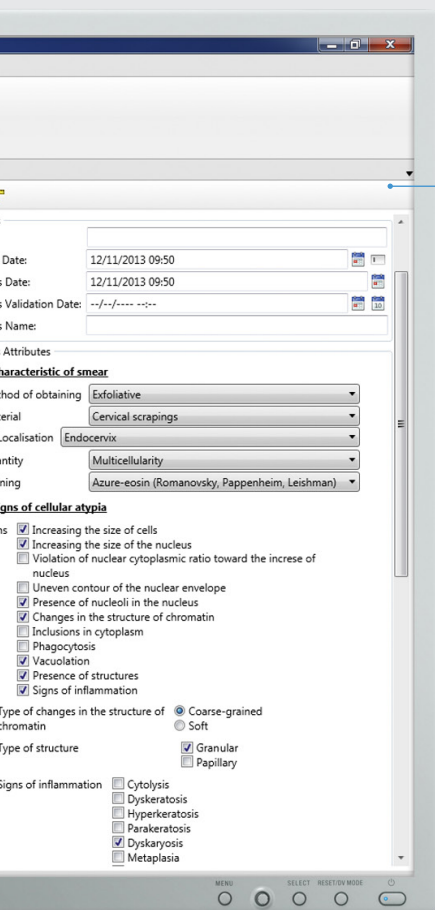


1 Sample microscopy

Find a required object on the cytology sample in video mode, and capture its digital image.

2 Simple interface

The toolbar is designed according to analysis' algorithm and ensures compliance with all procedure stages, thus providing reliable results. The toolbar has minimal size to retain space for working with images.



Combination of innovative technology and classical microscopy extends working possibilities

A pre-set algorithm for cytology analysis

An irreplaceable assistant offers a standardized algorithm for the cytological examination. Raise the quality of cytological examinations to a new level.

Analysis Attributes

Characteristic of smear

Method of obtaining: Exfoliative

Material: Cervical scrapings

Localisation: Endocervix

Quantity: Multicellularity

Staining: Azure-eosin (Romanovsky, Pappenheim, Leishman)

Signs of cellular atypia

Signs

- ☒ Increasing the size of cells
- ☒ Increasing the size of the nucleus
- ☐ Violation of nuclear cytoplasmic ratio toward the increase of nucleus
- ☐ Uneven contour of the nuclear envelope
- ☒ Presence of nucleoli in the nucleus
- ☒ Changes in the structure of chromatin
- ☐ Inclusions in cytoplasm
- ☐ Phagocytosis
- ☒ Vacuolation
- ☒ Presence of structures
- ☒ Signs of inflammation

Type of changes in the structure of chromatin: ☒ Coarse-grained ☐ Soft

Type of structure: ☒ Granular ☐ Papillary

Signs of inflammation

- ☐ Cytolysis
- ☐ Dyskeratosis
- ☐ Hyperkeratosis
- ☐ Parakeratosis
- ☒ Dyskaryosis
- ☐ Metaplasia
- ☒ Cellular elements of inflammation

Elements

- ☒ Leucocytes
- ☐ Macrophages
- ☐ Reticular cells
- ☐ Lymphoid elements

Proliferative activity

Attributes

- ☐ Presence of mitosis
- ☐ Presence of multinucleated cells
- ☒ Cellular polymorphism

Characteristic of cells

Differentiated features: Glandular

Characteristic of nucleus

Signs of dystrophy and necrobiosis

- ☐ Karyorhexis
- ☐ Karyopyknosis
- ☐ Karyolysis

Characteristic of nucleolus

Quantity: 1-2

Characteristic of background

Presence of cell debris: No

Cytological album of diagnoses

Result Interpretation: Glandular hyperplasia Templates

Notes: Case follow-up is required Templates

Diagnoses

Diagnosis	Diagnosed	Removed
Established Diagnoses		
New		

Specification

MX Vision Cyto system for cytological analysis

General characteristics

Working modes	scanning of cytology samples
Simultaneous loading	1 slide
Slide handling	manual, successive
Optical system	4×, 10×, 40×, 100× oil
Validation	according to the pre-set cytology algorithm
Cytological atlas	built-in with the ability to edit
Microscopic slides	standard 75×25 mm, 1.1 mm thick
Communication	bi-directional LIS, LIS2-A2 (ASTM), Ethernet
Multiple user access	4 pre-set types of users: Administrator, Doctor, Technician, Receptionist; new types of users can be added; adjustable access rights for users
Database	multiple systems can share one database; archiving of results via transfer to external storage media
Software	Vision Cyto® Basic <ul style="list-style-type: none">— database of patients, digital samples and analysis results— patient and analysis registration— manual field of view selection— a pre-set cytological atlas— a pre-set cytological album of diagnosis— quick preview, color marks and comments for captured cells in the sample— analysis form. Customizable reference guide to generate reports, following your personal requirements— remote access and network capabilities

Ordering Information

Description	Code
MX Vision Cyto / Standard Set System includes: MicroOptix MX 100T microscope, Vision CAM® V005 (C) digital camera, Vision Cyto® Basic software, personal computer	60.0017.13
MX Vision Cyto / Primary Set Set includes: MicroOptix MX 100T microscope, Vision CAM® V005 (C) digital camera, Vision Cyto® Basic software. <i>Use your personal computer*</i>	60.0017.14

* Minimal PC requirements: Intel Core i5, 4 GB RAM, 1 TB HDD, Windows 7, 1920x1080

We reserve the right to change specification without notice.



West Medica Produktions- und Handels-GmbH
Brown-Boveri-Straße 6, B17-1,
2351 Wiener Neudorf, Austria
tel.: +43 (0) 2236 892465, fax: +43 (0) 2236 892464
vienna@westmedica.com, www.microoptix.com

Official Distributor